



**Georgia State University**

**LIBRARY MASTER PLAN**

Presented by **Pfeiffer Partners** 24 January 2018



building on innovation at the GSU Library



clarkston



dunwoody



alpharetta



atlanta



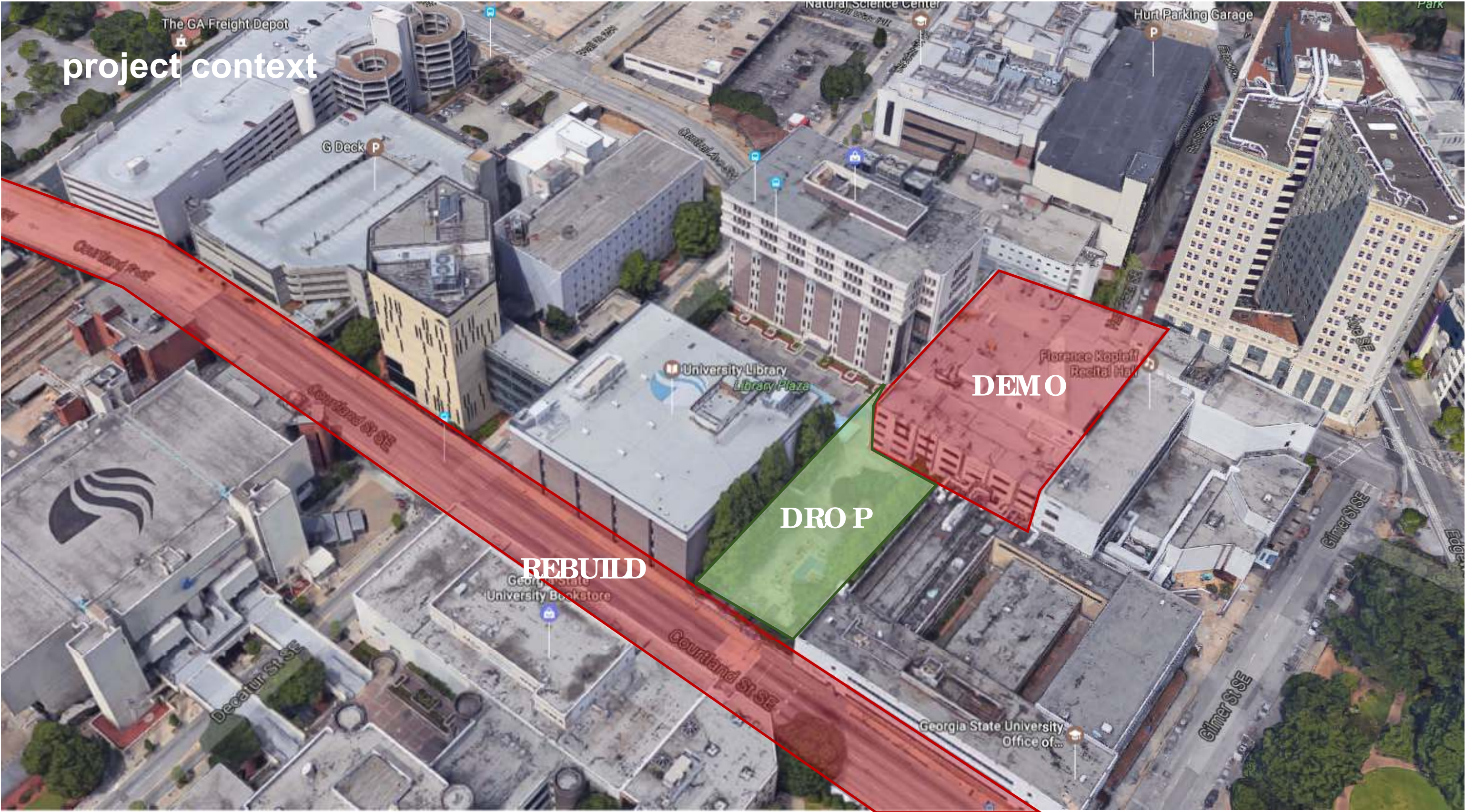
decatur



newton









toward openness



# high-density storage

## **Academic Libraries with Offsite Storage**

Case Western Reserve University

Cornell University

Columbia University / Princeton University

Duke University

The Harvard Depository

Indiana University Bloomington

Minnesota Library Access Center

Northeastern Ohio Cooperative Regional

Ohio State University

Oklahoma State University

Southeast Ohio Regional

Southern Illinois University Carbondale

Southwest Ohio Regional

University of California – Northern Regional

University of California – Southern Regional

University of Florida

University of Michigan

University of South Carolina

University of Texas at Austin / Texas A&M

Virginia Tech University

Washington Research Library Consortium

West Virginia University

Yale University



Harvard Depository, in Southborough, MA, (1986,2011)



Ohio State University Libraries. Offsite Storage,, Columbus, OH

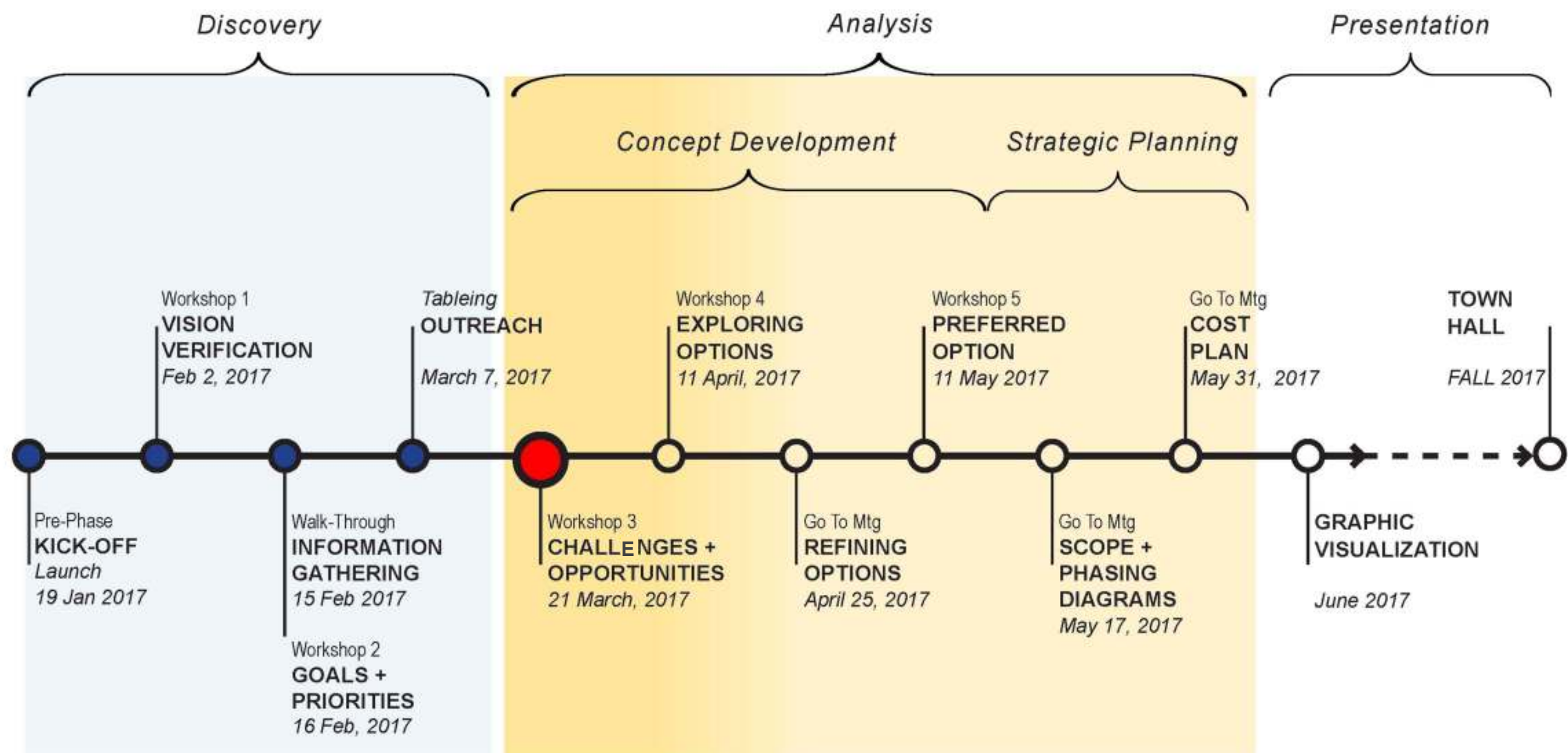


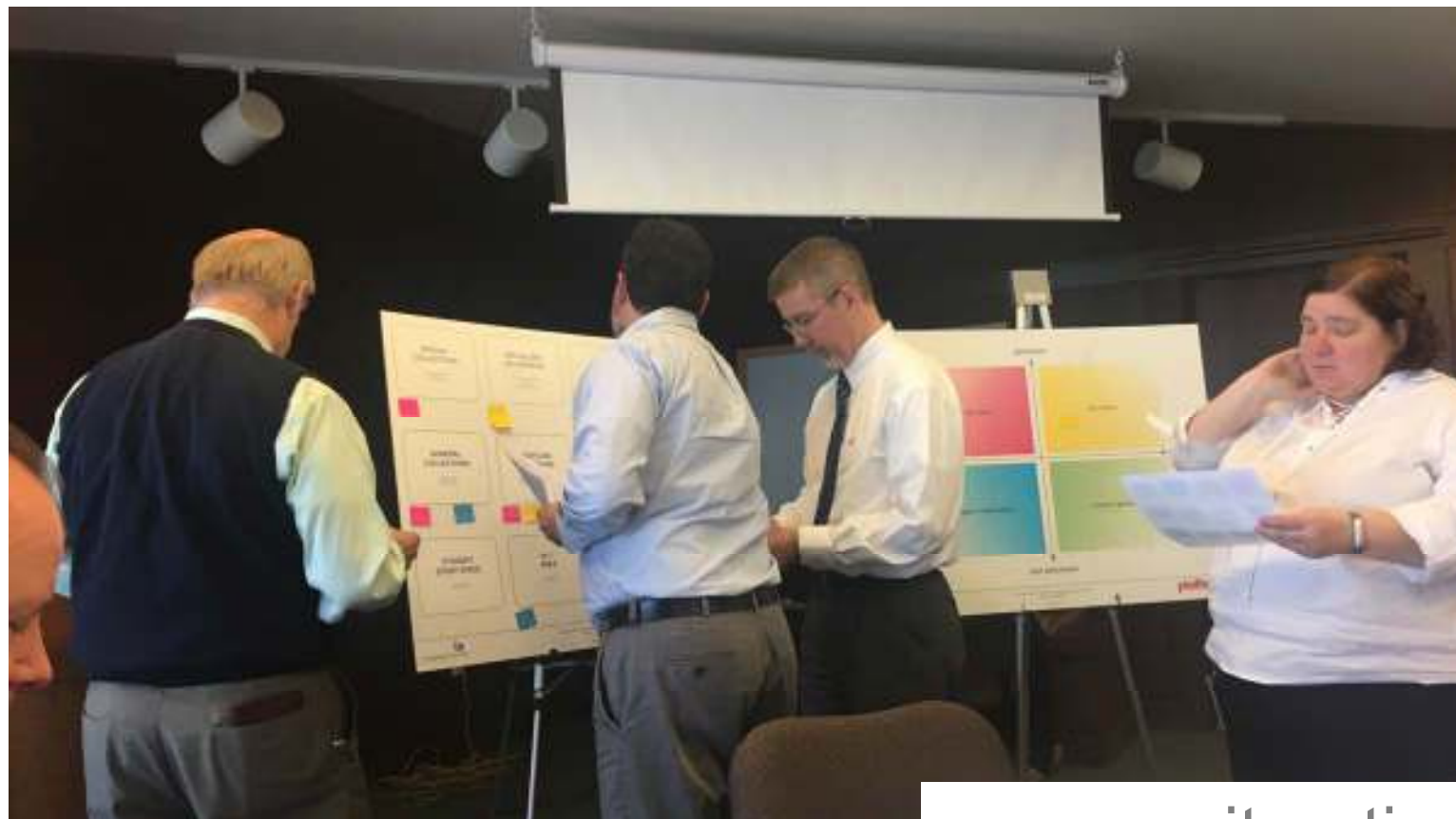
University of Virginia , Ivy Stacks Retrofit (2010)



Washington Research Library Consortium Book Storage Facility,  
Upper Marlboro, MD (2010)

# GSU Library master plan schedule





an iterative process...



# in step with GSU's strategic plan

## **scholarship support & student success**

- entry sequence
- subject librarians
- library instruction / classroom reconfig

## **research culture**

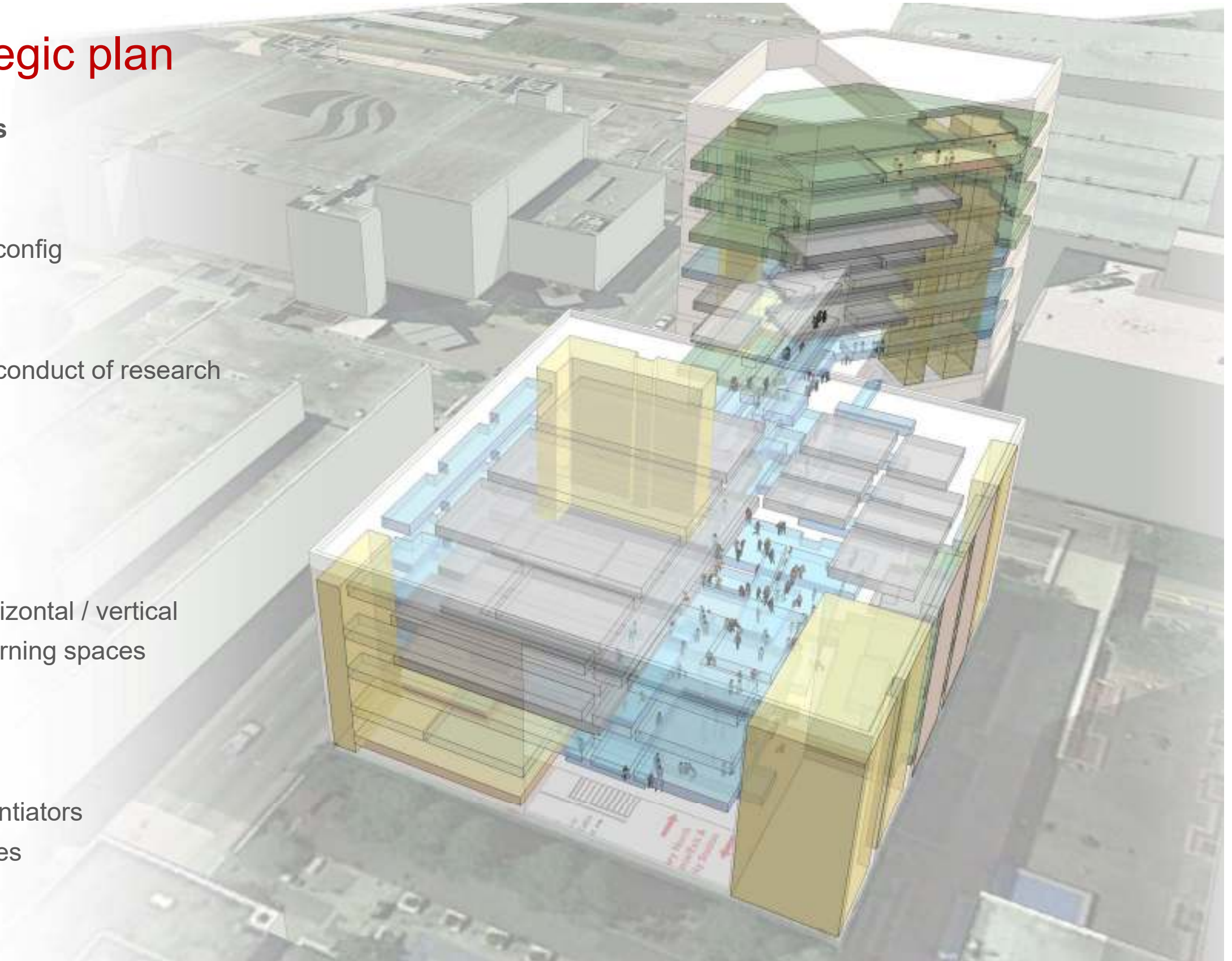
- supporting infrastructure for the conduct of research
- graduate/scholars commons
- special collections
- data visualization (curve ii)

## **dynamic academic community**

- reduce collection footprint → horizontal / vertical
- “alone together”: new shared learning spaces
- shared dedicated space

## **destination spaces**

- architectural: wayfinding / differentiators
- behavioral: emerging communities



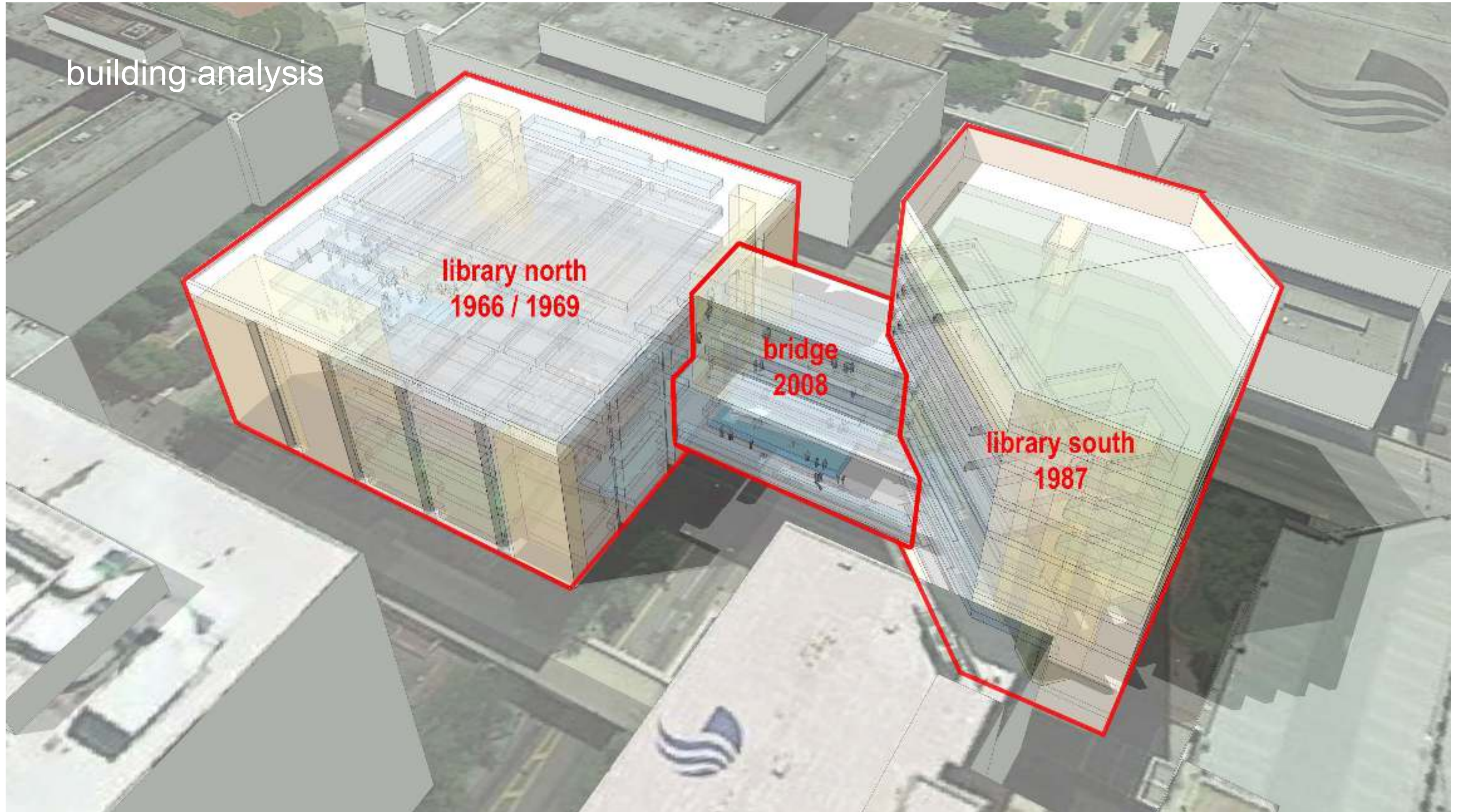
goals and priorities



goals and priorities - outreach



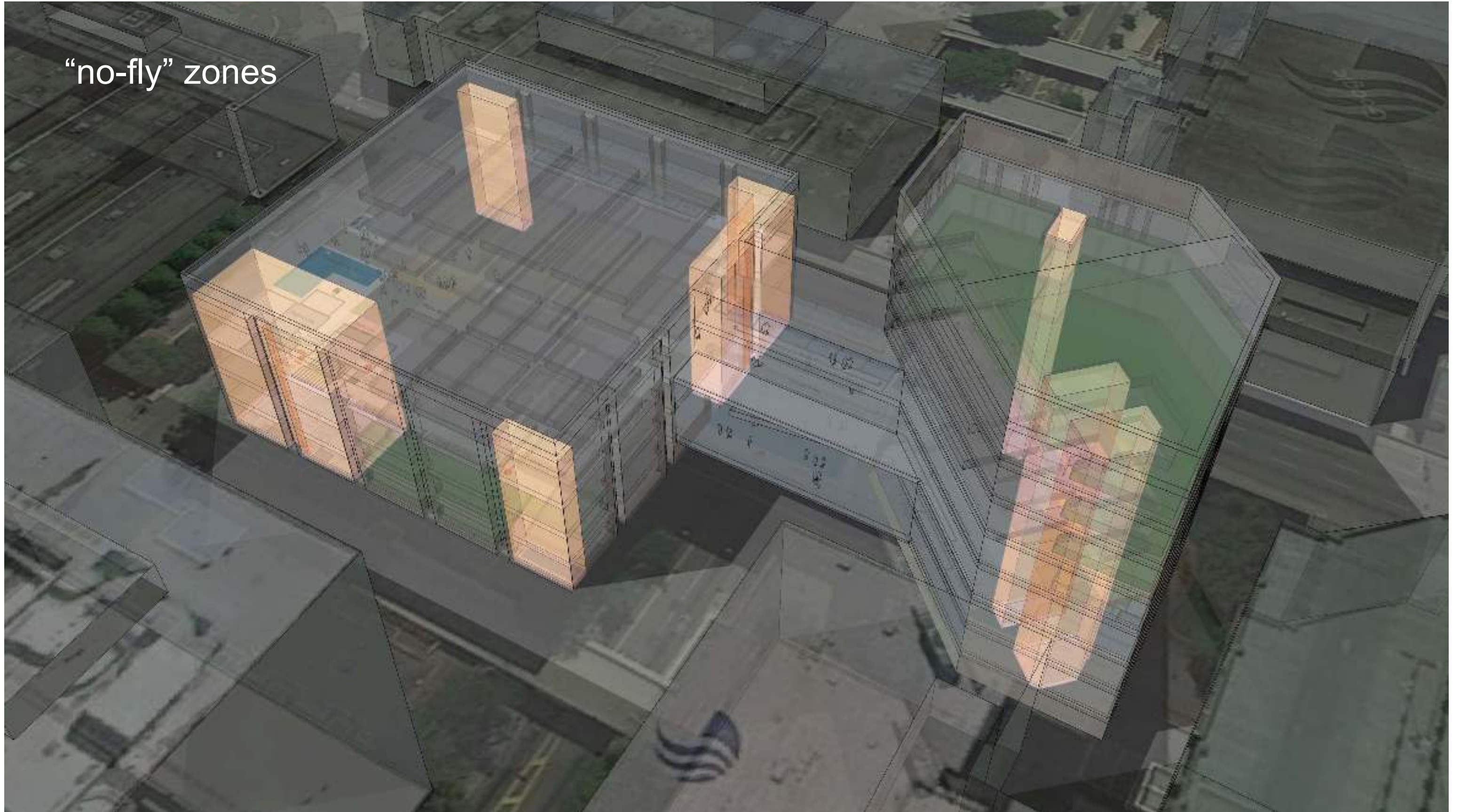
building analysis



## working with existing buildings

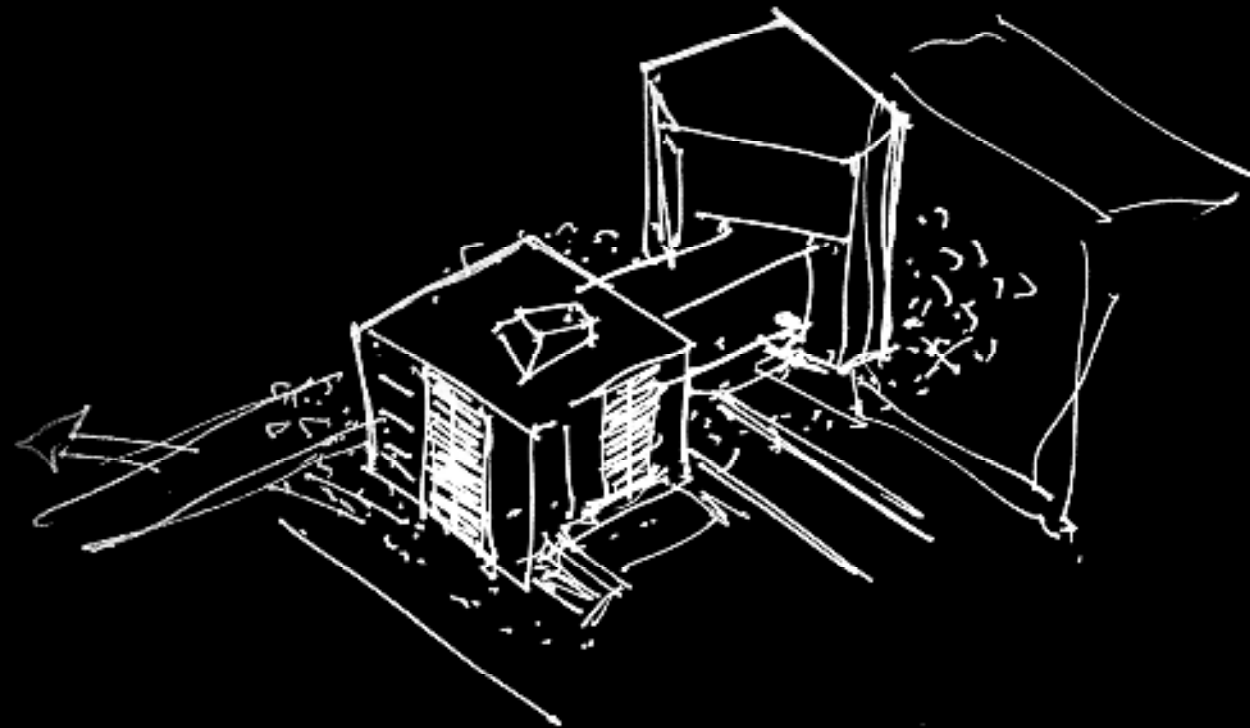


“no-fly” zones



high priority

sufficient space | quality space | the right mix of spaces



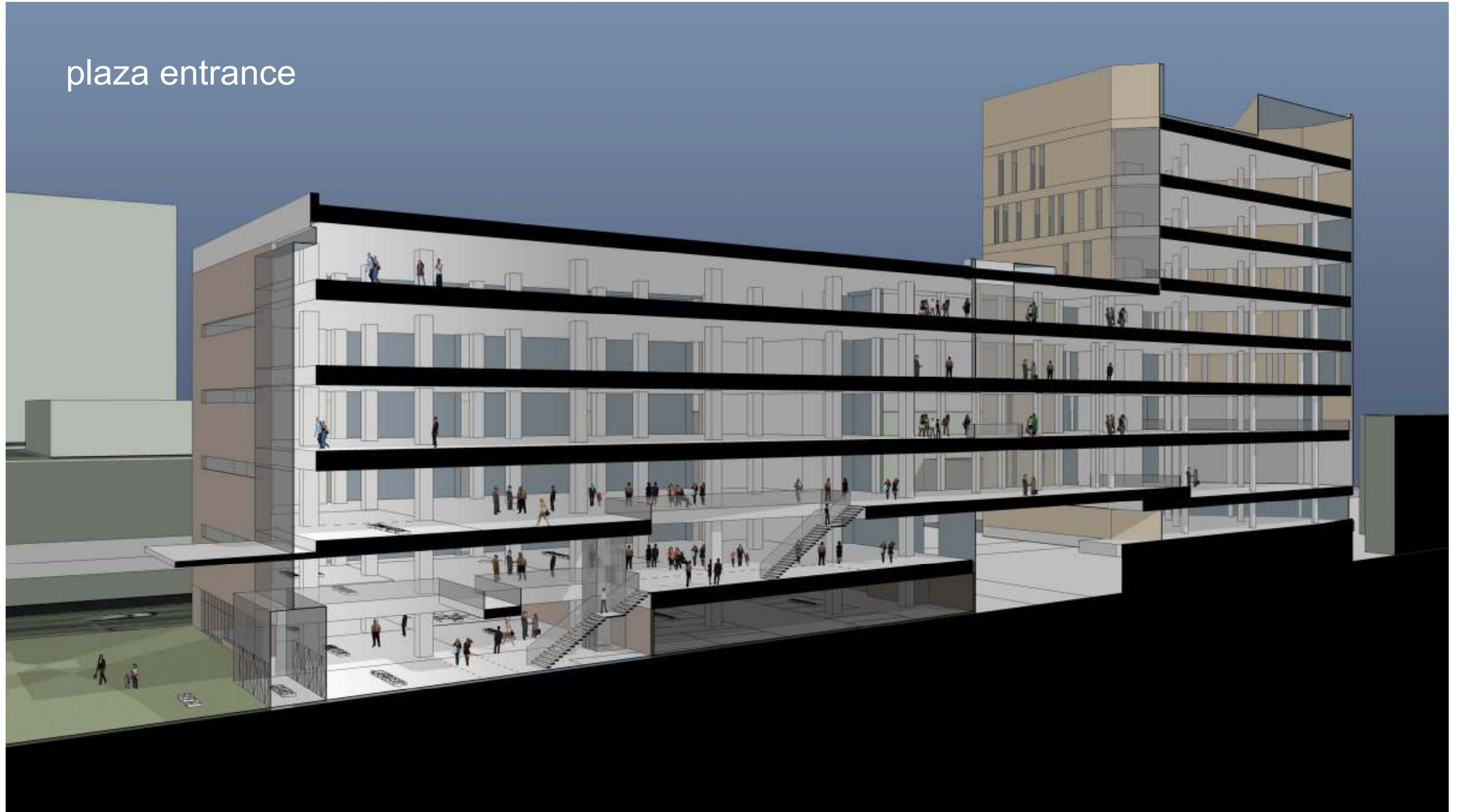
## building section – existing conditions



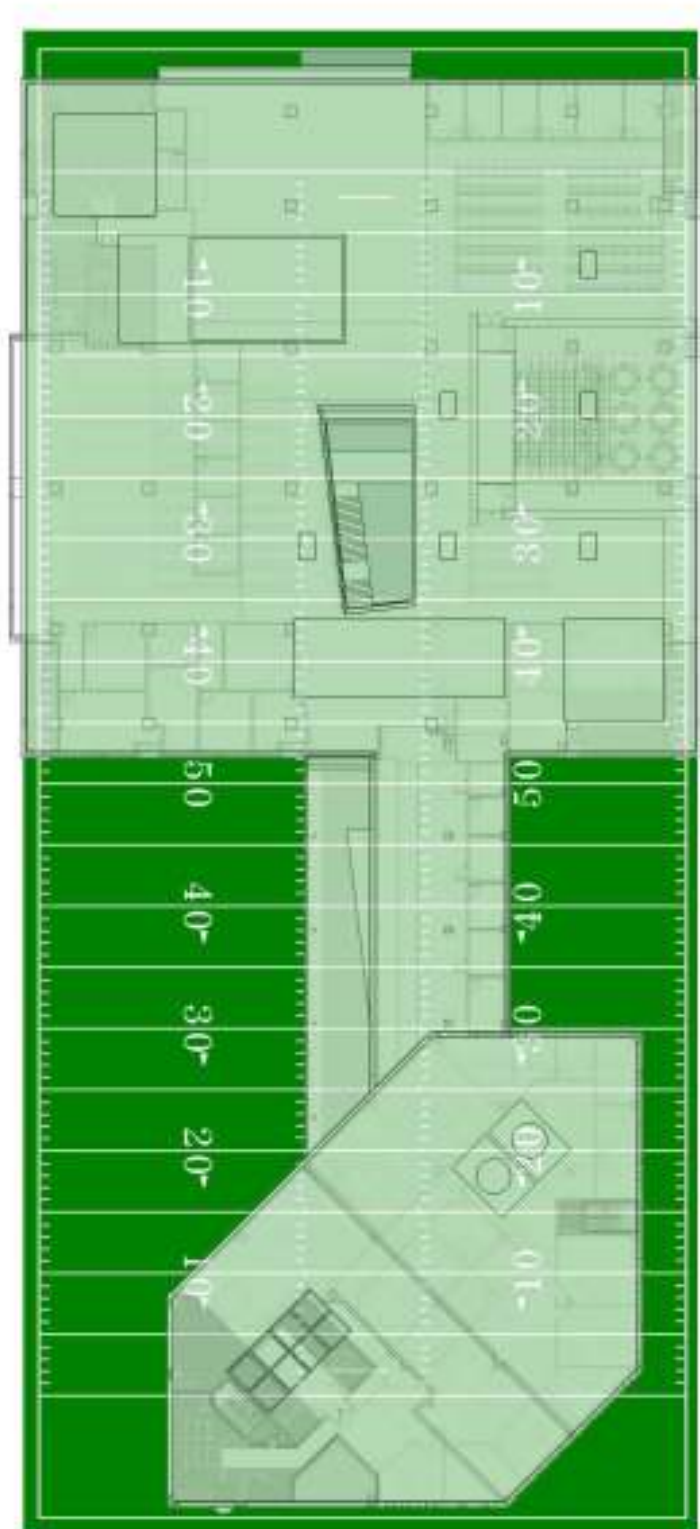
## building section – lowered plaza

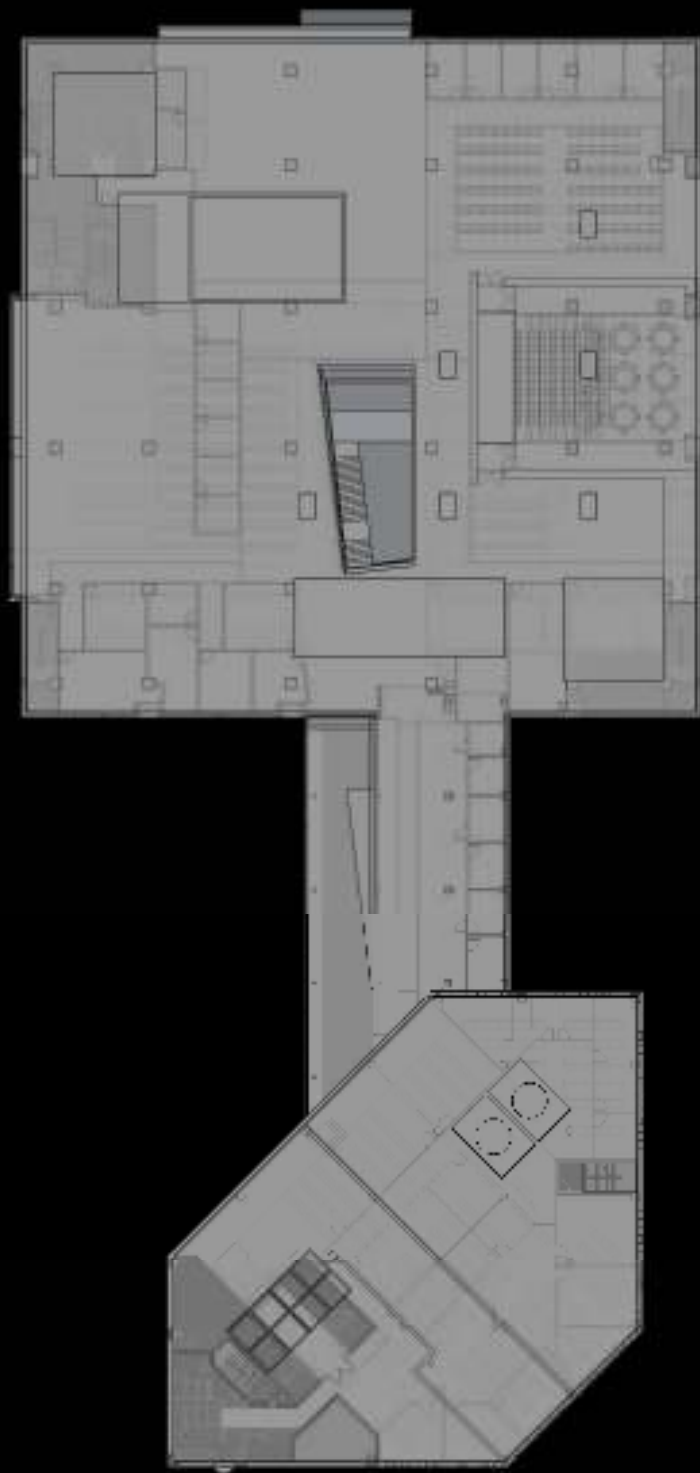


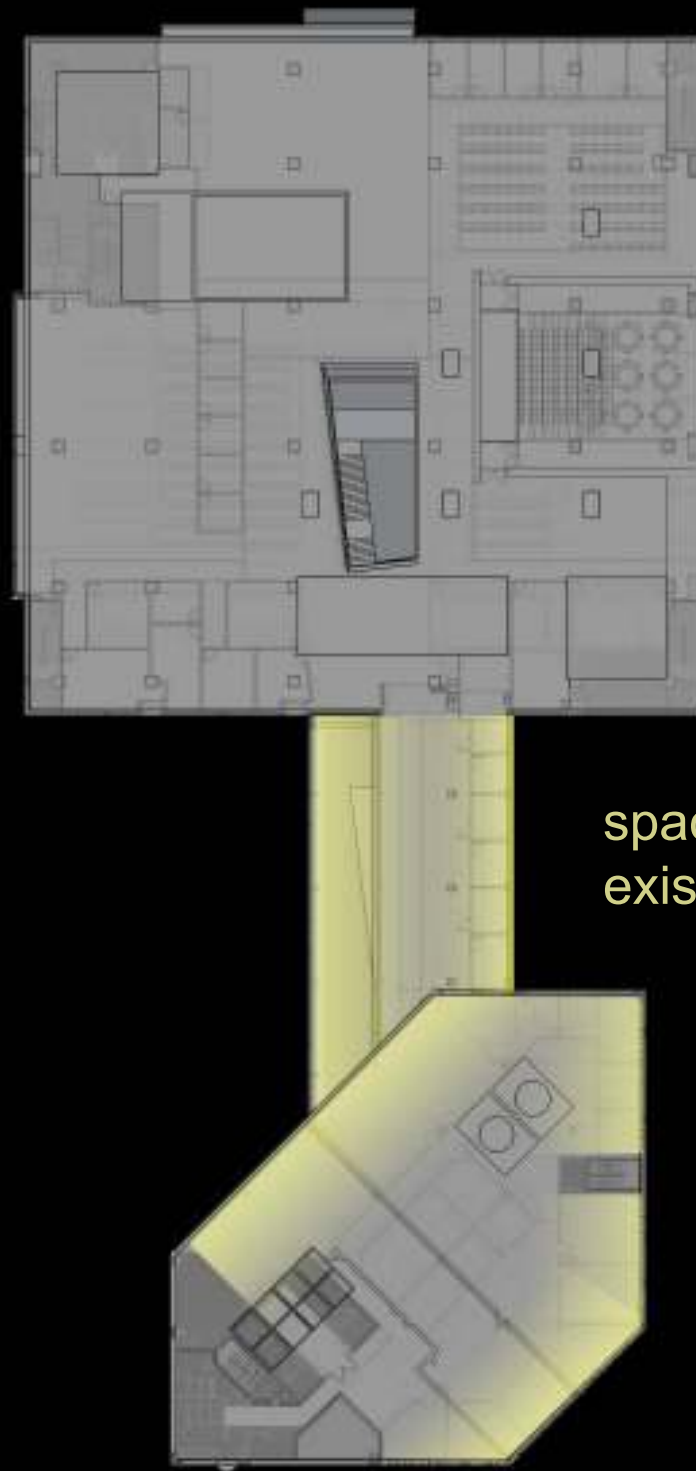
plaza entrance





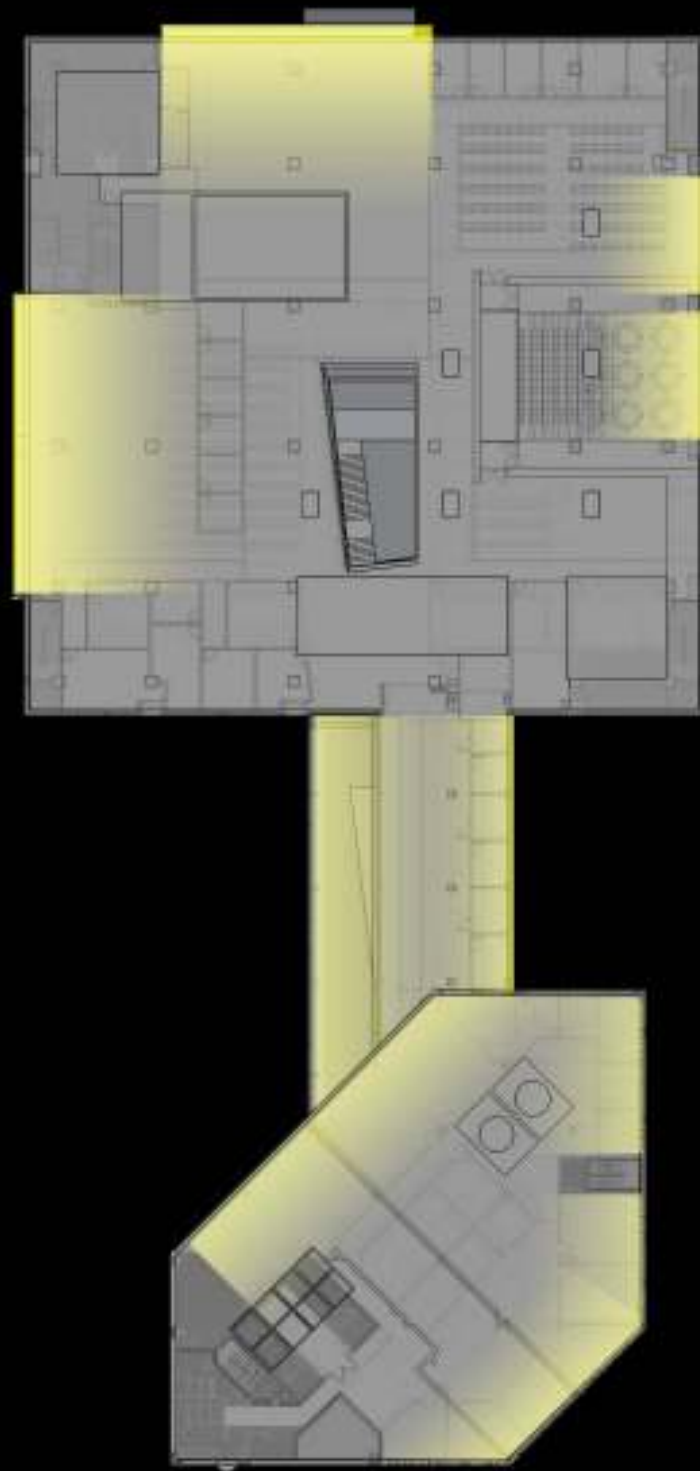


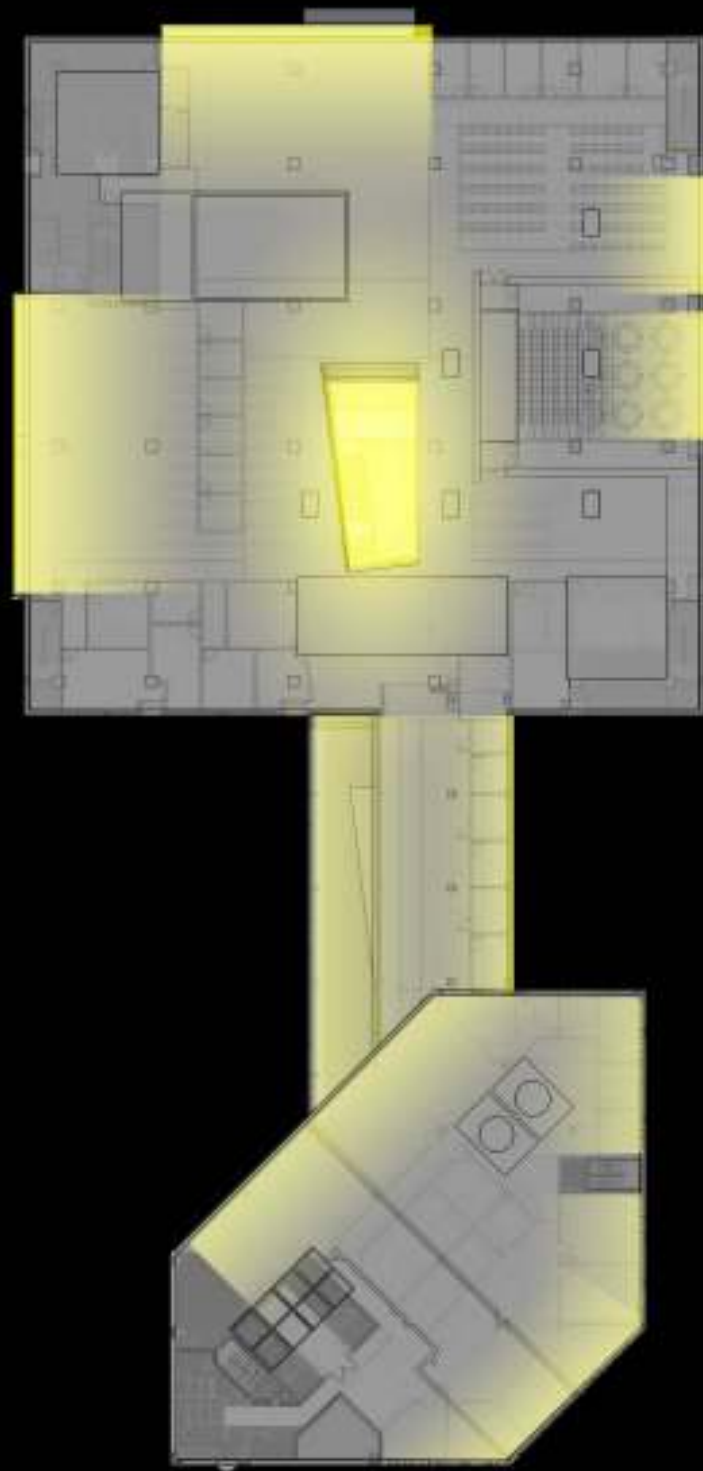




spaces with daylight in the  
existing building

new expanses of glass bring in  
light from the perimeter...

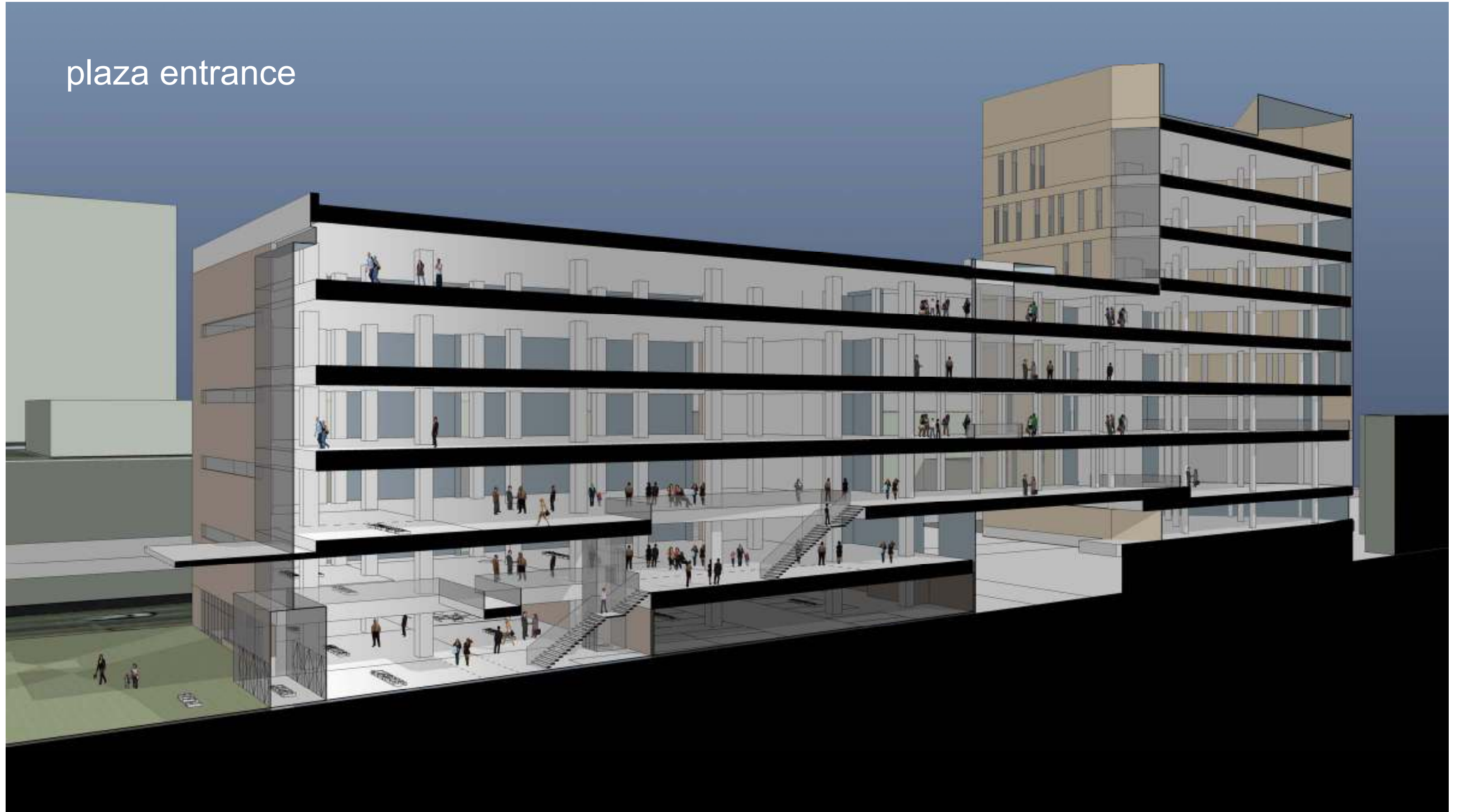




the lantern stair brings light in through  
the center of the building



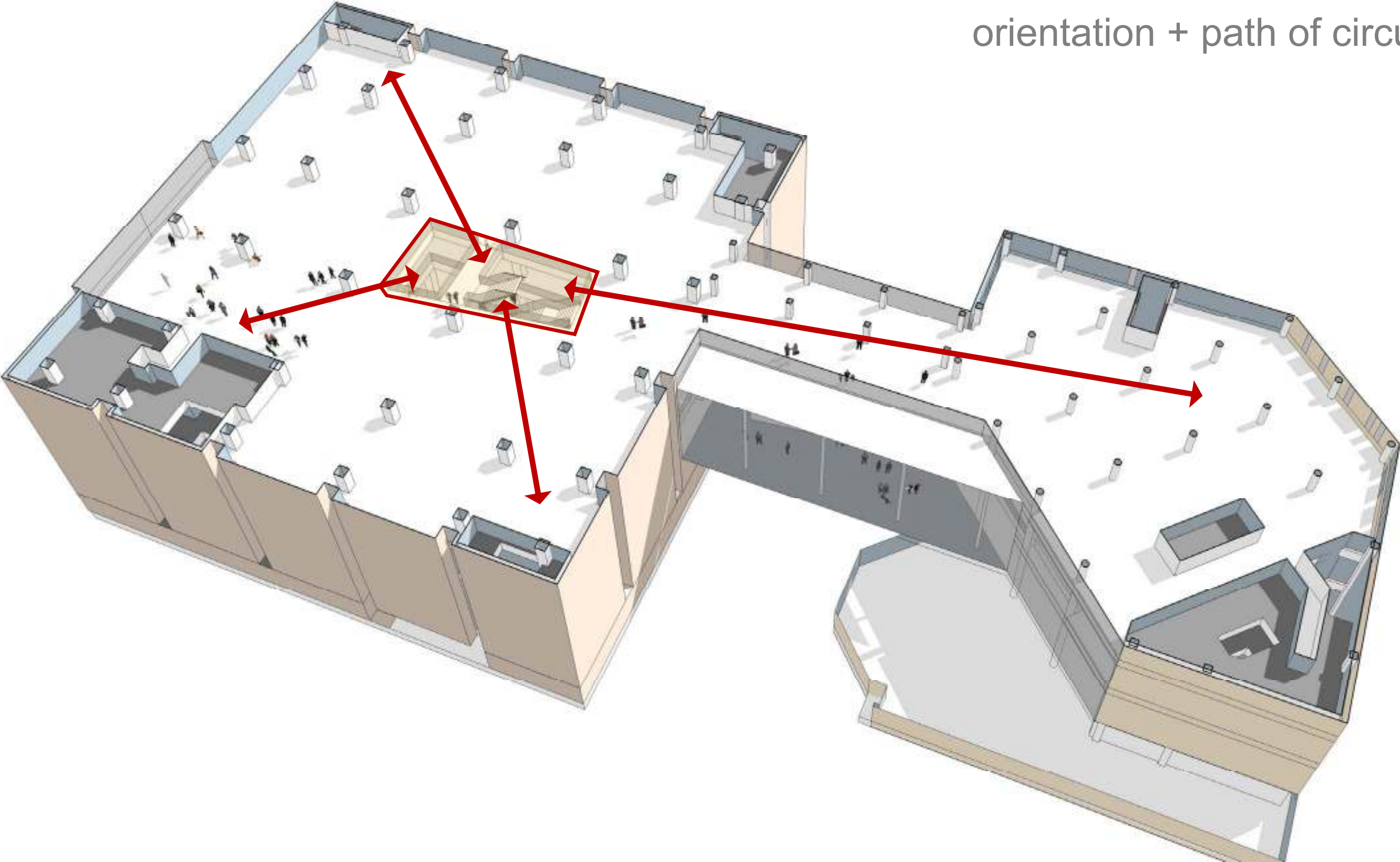
plaza entrance



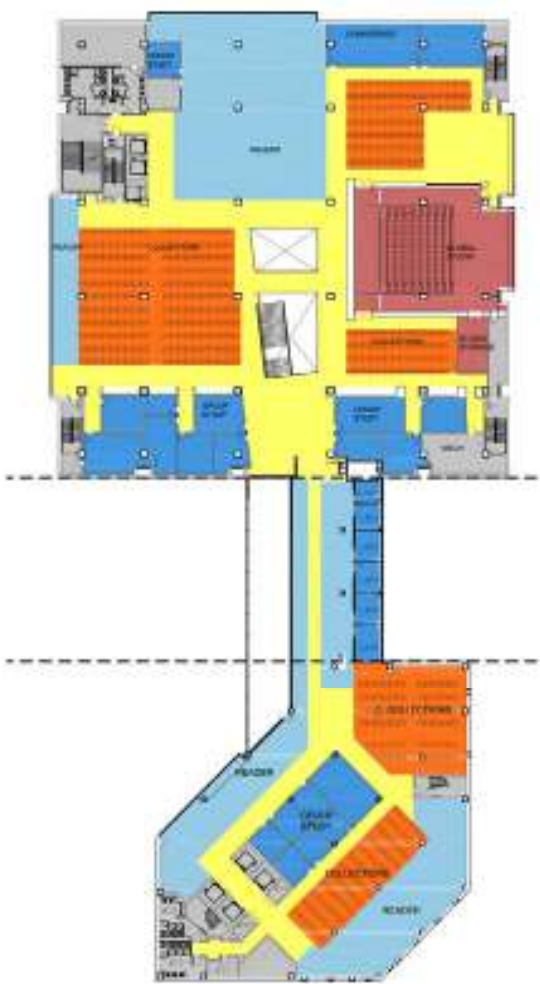
*lantern stair*



orientation + path of circulation



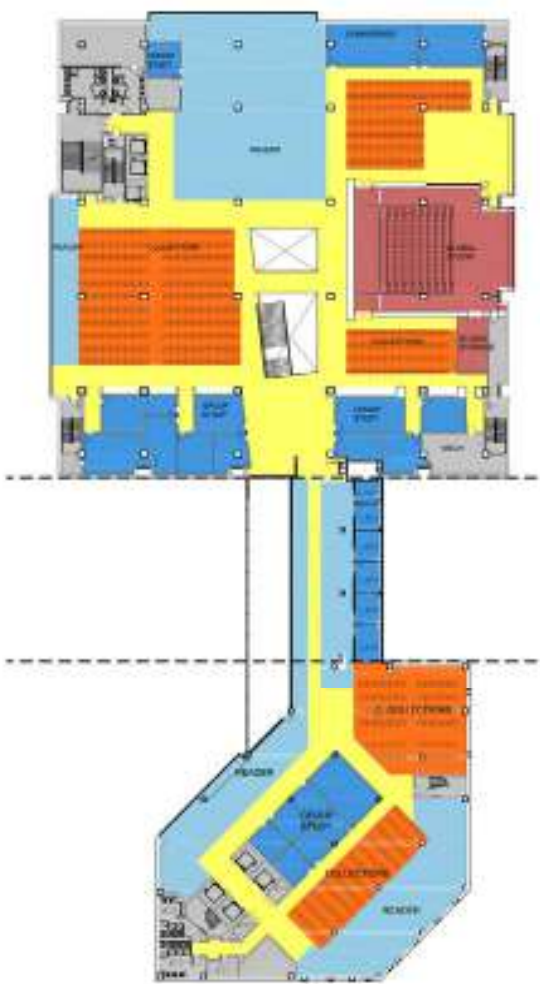
global studio



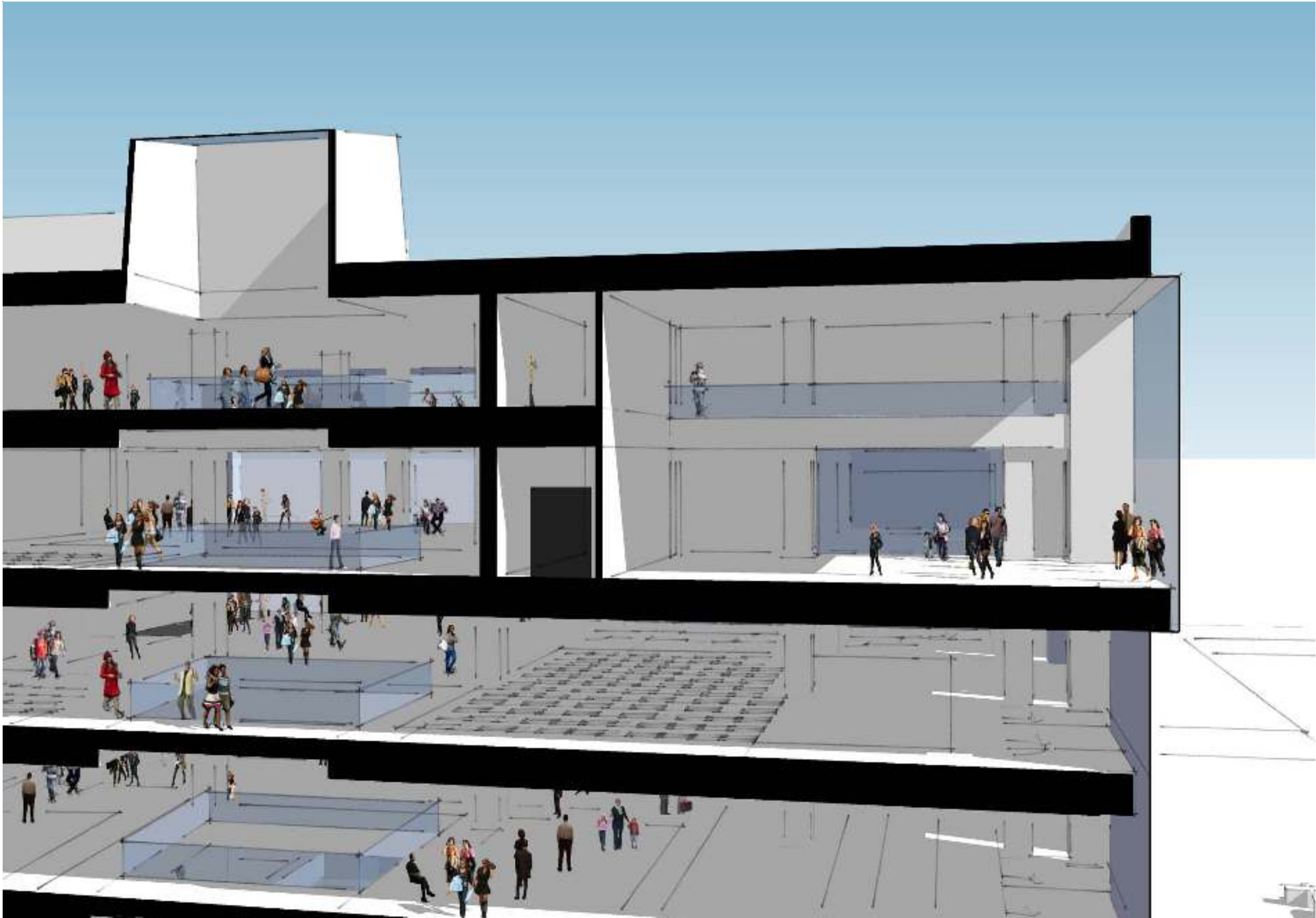
reader
group study
circulation
library staff
collections
support
global studio



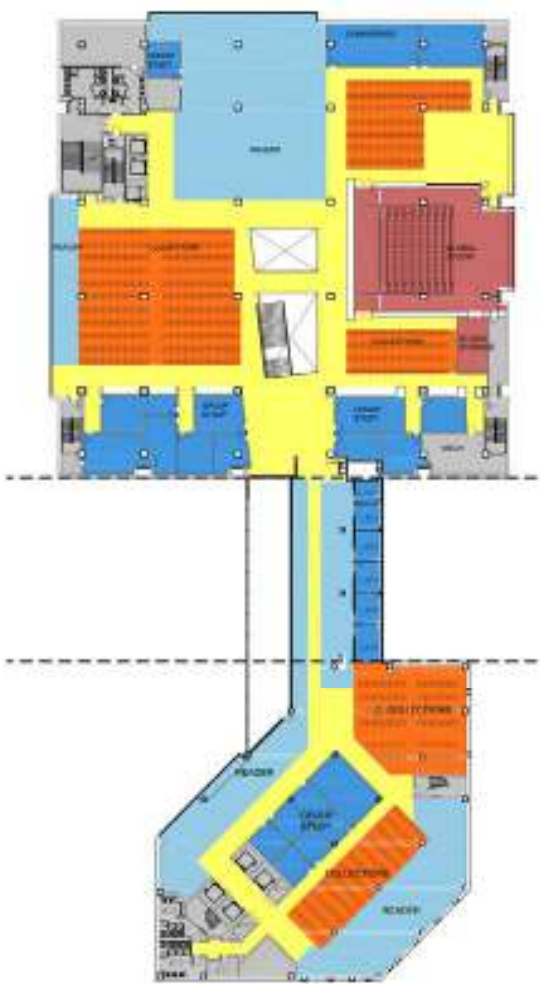
global studio



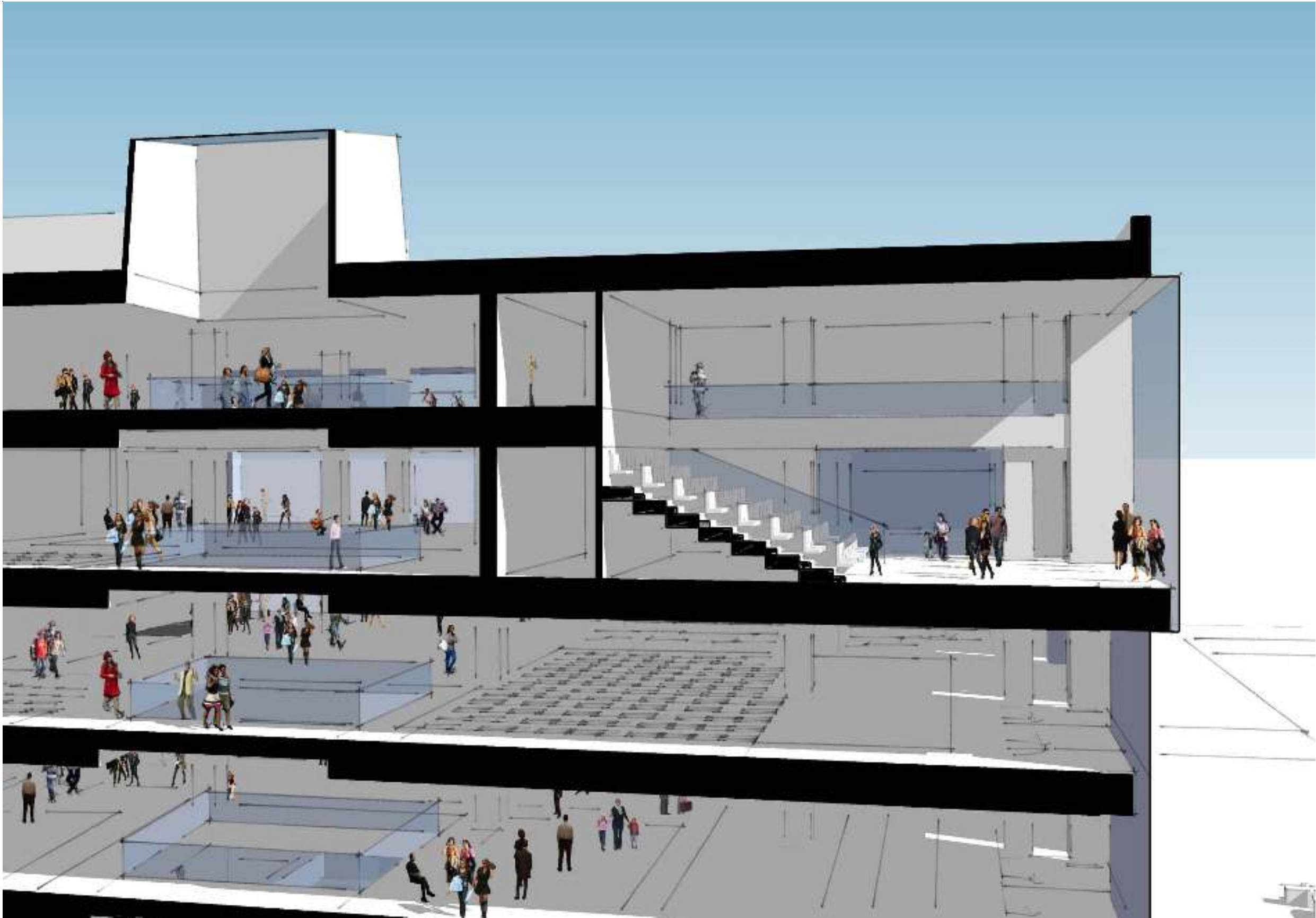
reader
group study
circulation
library staff
collections
support
global studio



global studio



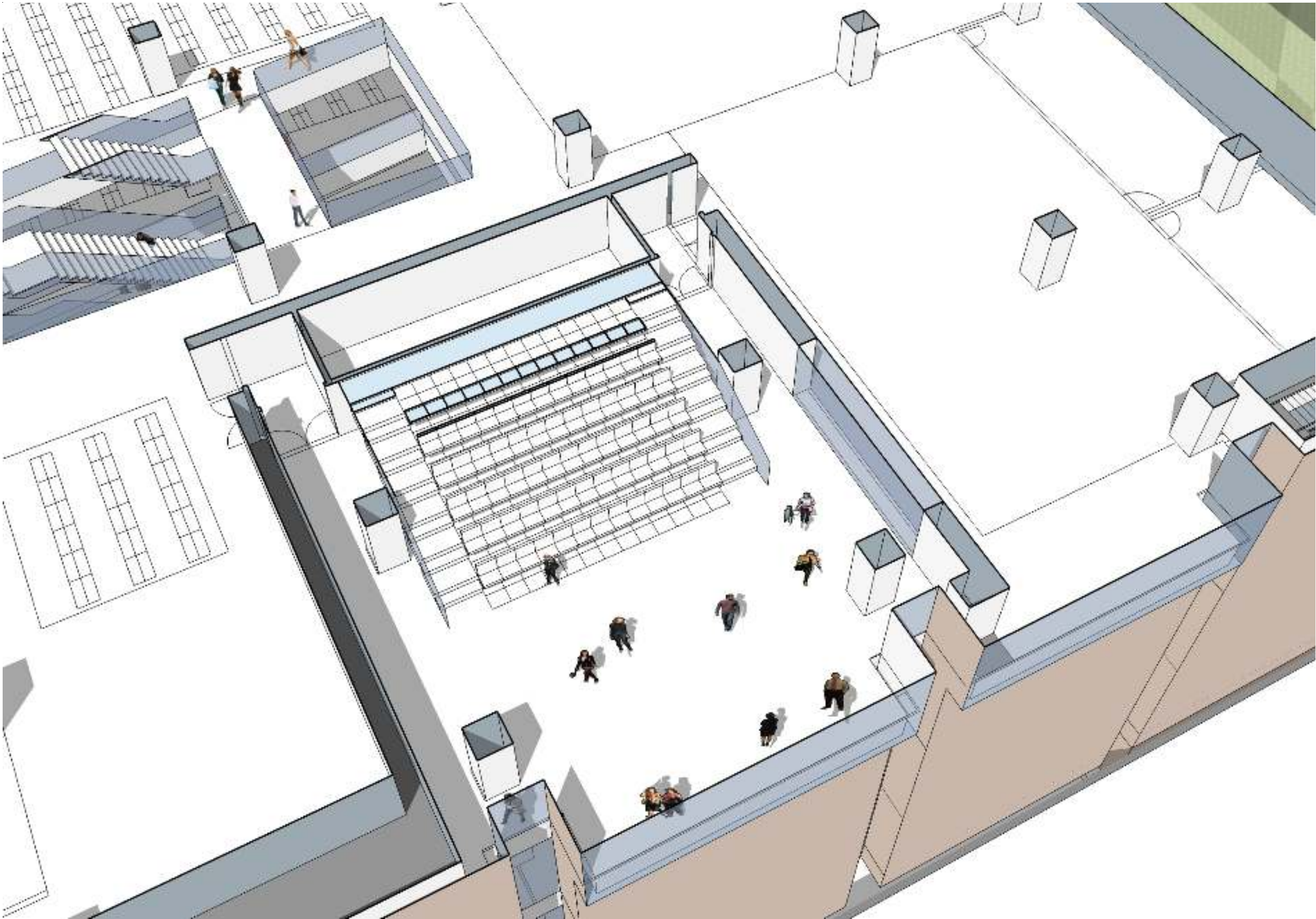
reader
group study
circulation
library staff
collections
support
global studio



global studio



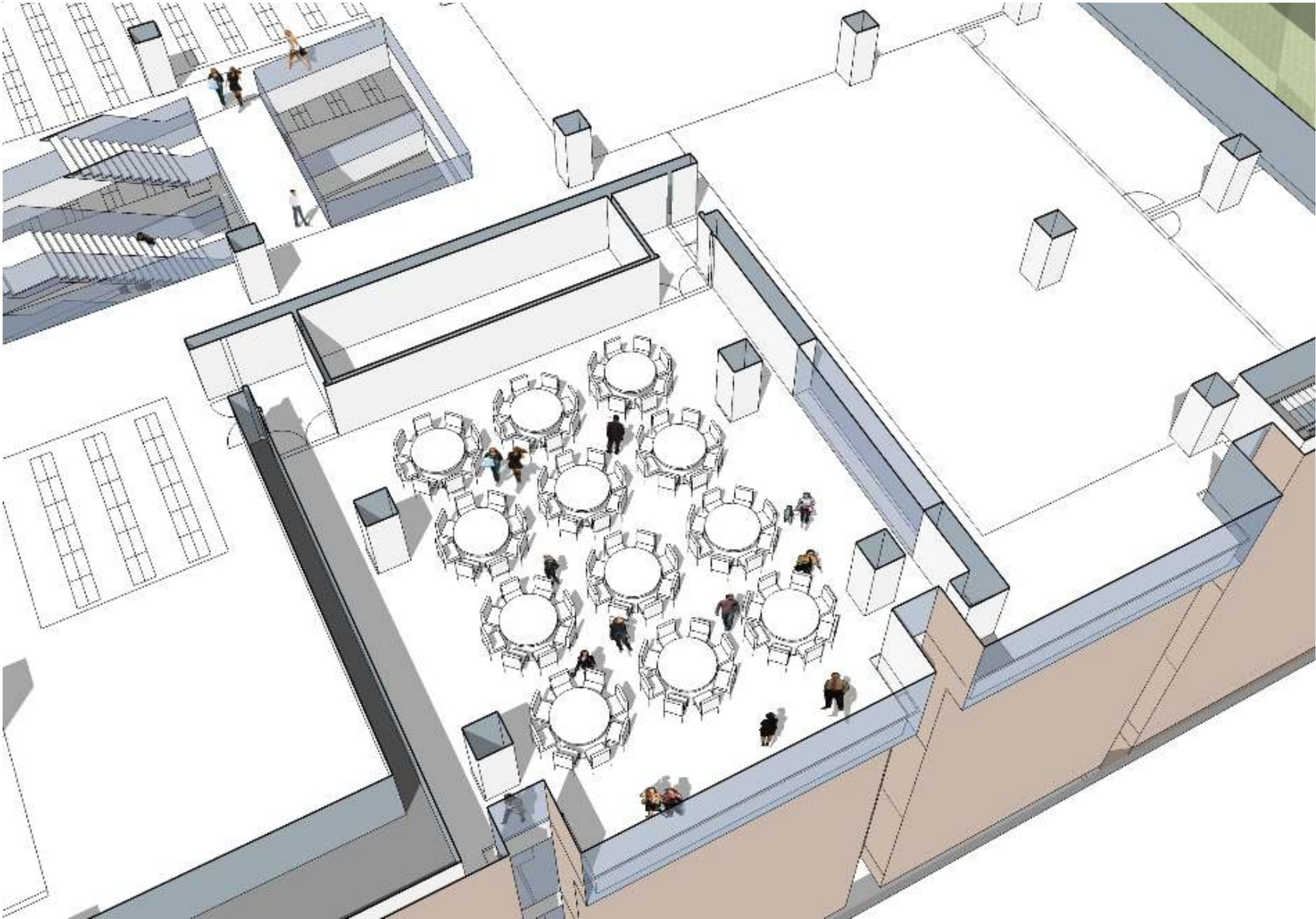
reader
group study
circulation
library staff
collections
support
global studio



global studio



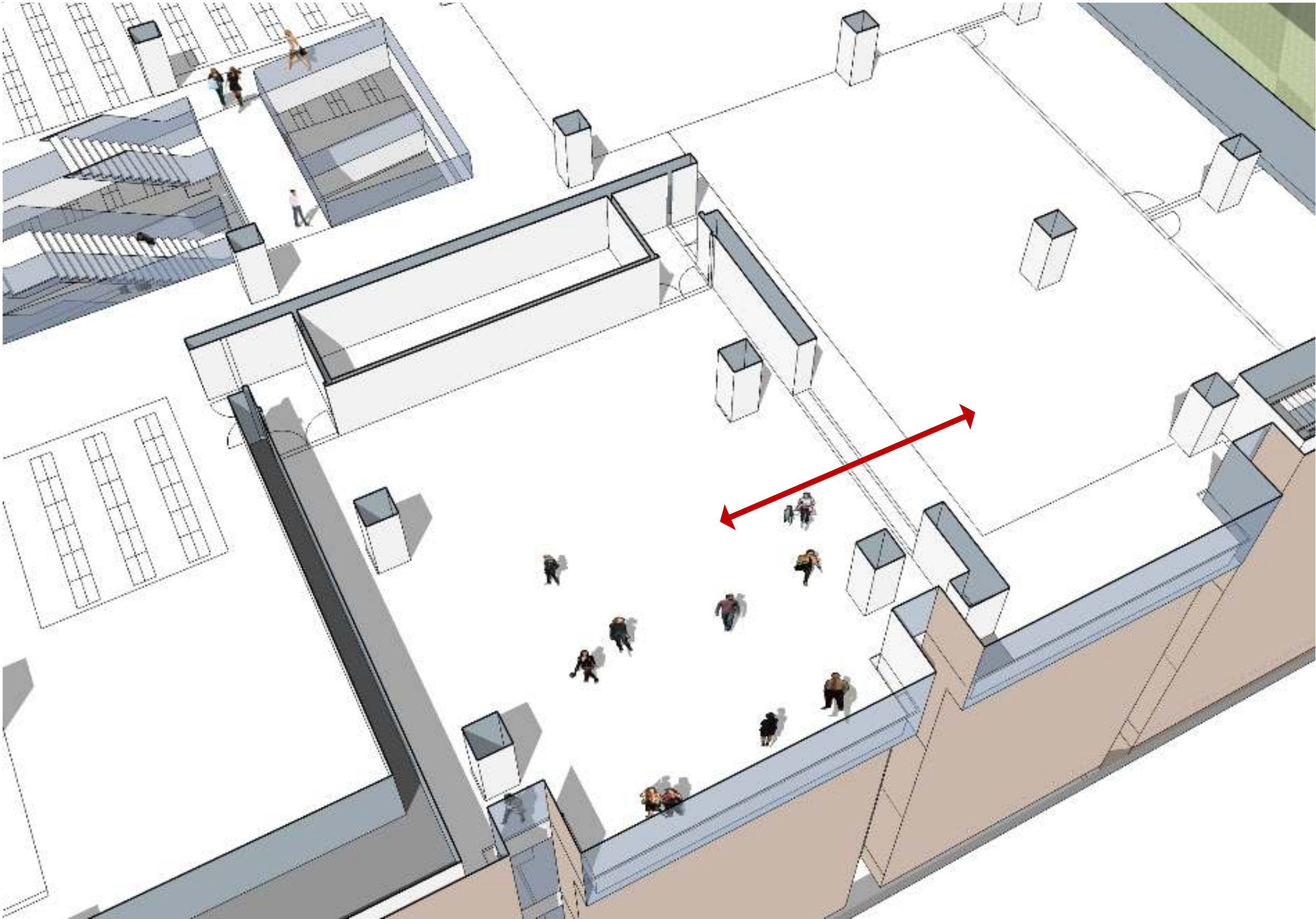
reader
group study
circulation
library staff
collections
support
global studio



global studio



reader
group study
circulation
library staff
collections
support
global studio



global studio



reader
group study
circulation
library staff
collections
support
global studio



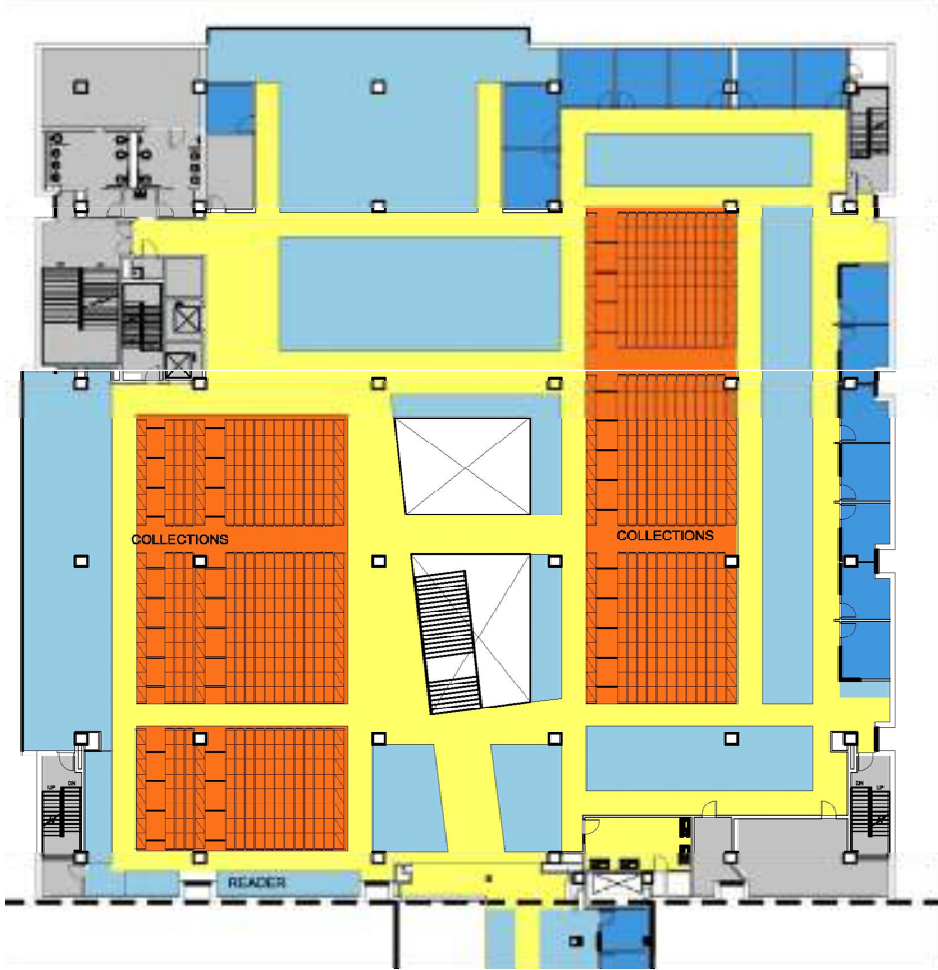


from collection-centric towards learner-centric



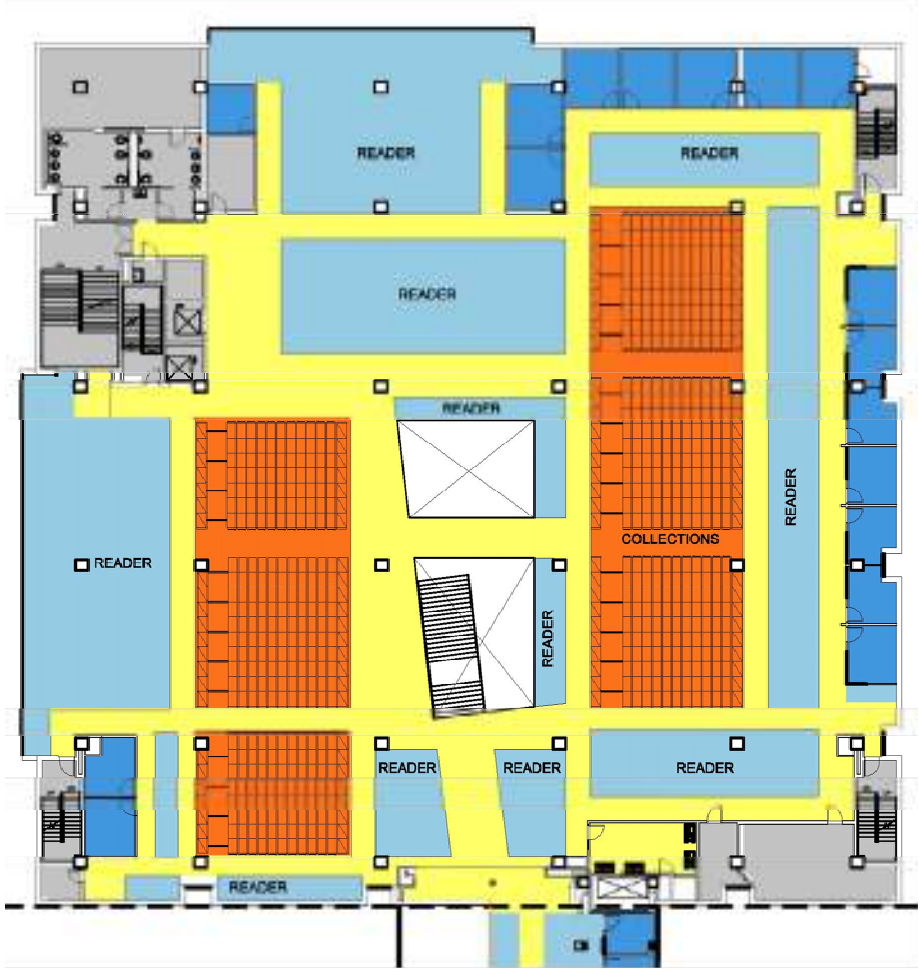
**\*collection\***

- collection:  $\pm 8,940$  SF  
 $\pm 1,073$  DFS  
 $\pm 45,066$  LF
- reader seating:  $\pm 6,170$  SF
- group study:  $\pm 1,755$  SF
- additional group study rooms: 8



**\*collection + reader\***

- collection:  $\pm 6,665$  SF  
 $\pm 798$  DFS  
 $\pm 33,516$  LF
- reader seating:  $\pm 8,030$  SF
- group study:  $\pm 1,755$  SF
- additional group study rooms: 8



**\*reader\***

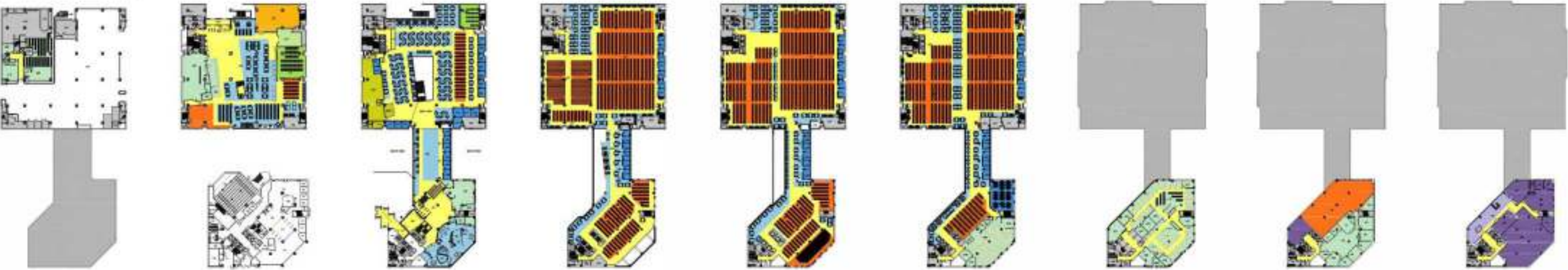
- collection:  $\pm 5,695$  SF  
 $\pm 698$  DFS  
 $\pm 29,316$  LF
- reader seating:  $\pm 8,505$  SF
- group study:  $\pm 1,980$  SF
- additional group study rooms: 10

seat count

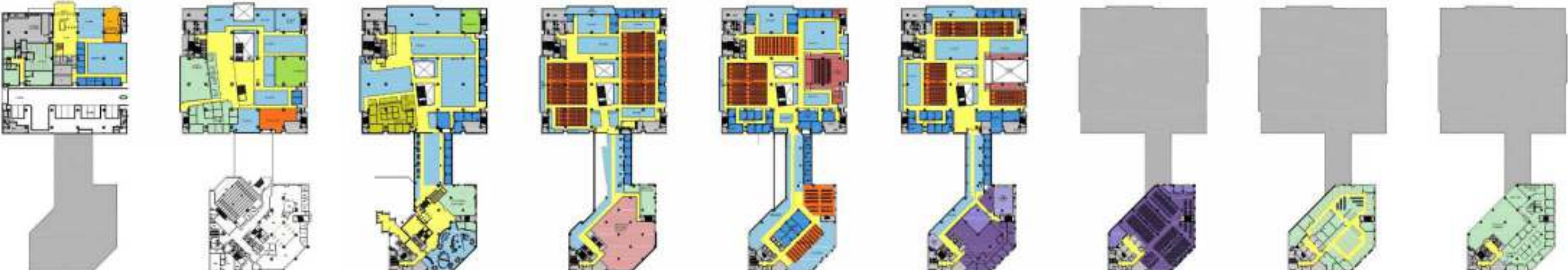
existing				proposed			
Location		Group Study Room	Subtotal Seat Count	Location		Group Study Room	Subtotal Seat Count
Bldg-Flr	Open Plan			Bldg-Flr	Open Plan		
Link 2	83	30	113	Link 2	83	30	113
Link 3	42	33	75	Link 3	42	33	75
Link 4	41	28	69	Link 4	41	28	69
Link 5	39	33	72	Link 5	39	33	72
LN_P	-	-	0	LN_P	80	40	120
LN1	295	-	295	LN1	257	18	275
LN2	313	40	353	LN2	331	69	400
LN3	171	35	206	LN3	191	73	264
LN4	166	43	209	LN4	155	124	279
LN5	210	43	253	LN5	148	112	260
LS2 (lobby)	13	-	13	LS2 (lobby)	-	-	0
LS2C (Curve)	59	-	59	LS2C (Curve)	59	-	59
LS3	65	-	65	LS3	20	-	20
LS4	46	-	46	LS4	88	36	124
LS5	93	-	93	LS5	26	-	26
1,636		285	1,921	1,560		596	2,156
85%		15%		72%		28%	
				LN-Plaza Café 10			
				LN-1 Classroom 50			
				LN-2 Classroom 24			
				Graduate Center 124			
				Global Studio (Grp Study layout) 40			
				248			
				2,404 25% increase			

key features of the master plan

existing



proposed



p 1 2 3 4 5 6 7 8

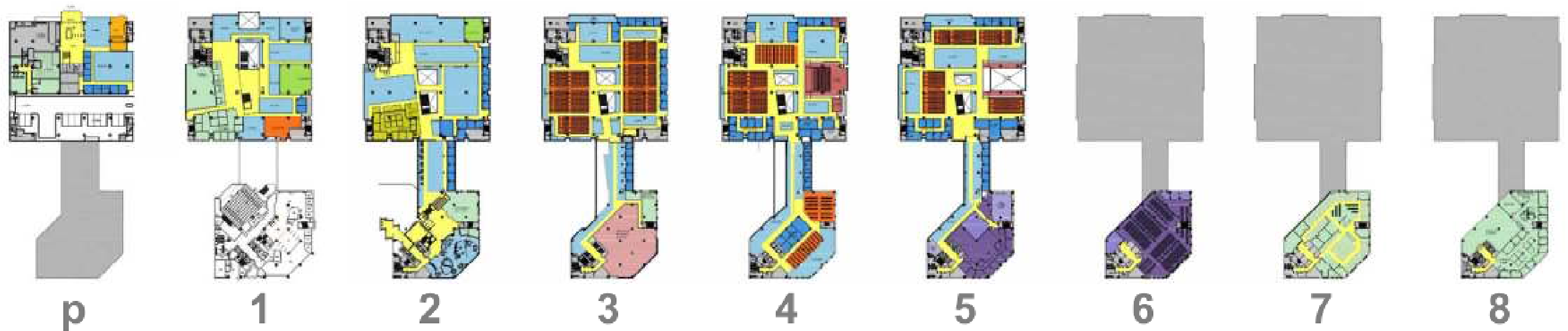
## key features of the master plan

- new plaza entrance
- potential 24-hr student space
- café
- more reader seats and group study rooms

- improved access to library services
- Improved library instruction spaces
- flex event space

- the global studio
- new graduate student center
- larger, day-lit study spaces
- better way-finding and circulation

- special collections reading room and program space
- exhibit spaces
- improved connectivity with the perimeter colleges







alpharetta library\_ground level



# clarkston library

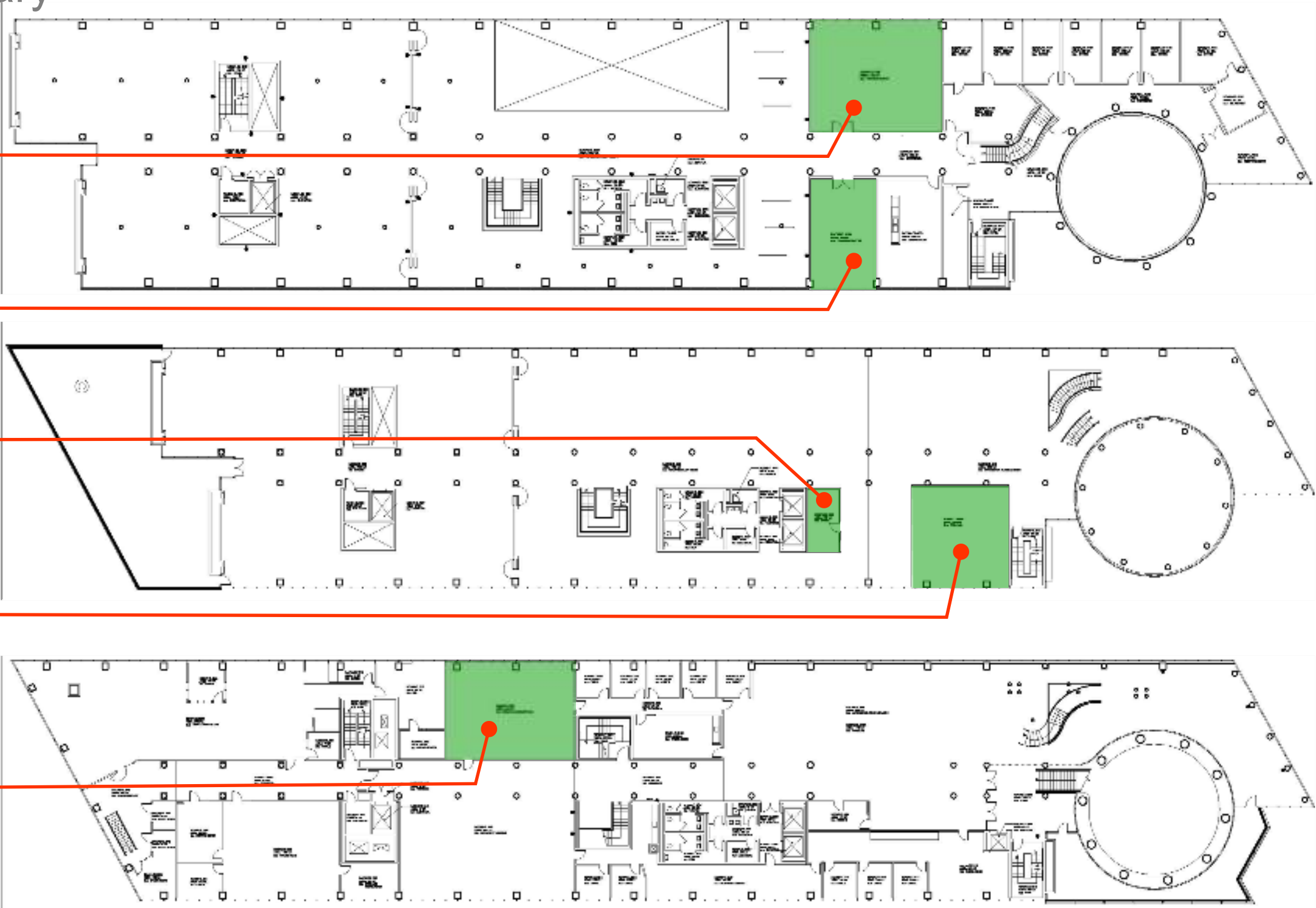
ROOM: **CL 4190**  
AREA: 1,183 SF  
MEETING ROOM

ROOM: **CL 4180**  
AREA: 586 SF  
TRAINING ROOM

ROOM: **CL 3210**  
AREA: 205 SF  
OFFICE

ROOM: **CL 3100**  
AREA: 1,020 SF  
OPEN LAB

ROOM: **CL 2220**  
AREA: 1,299 SF  
SPECIAL CLASSROOM LAB

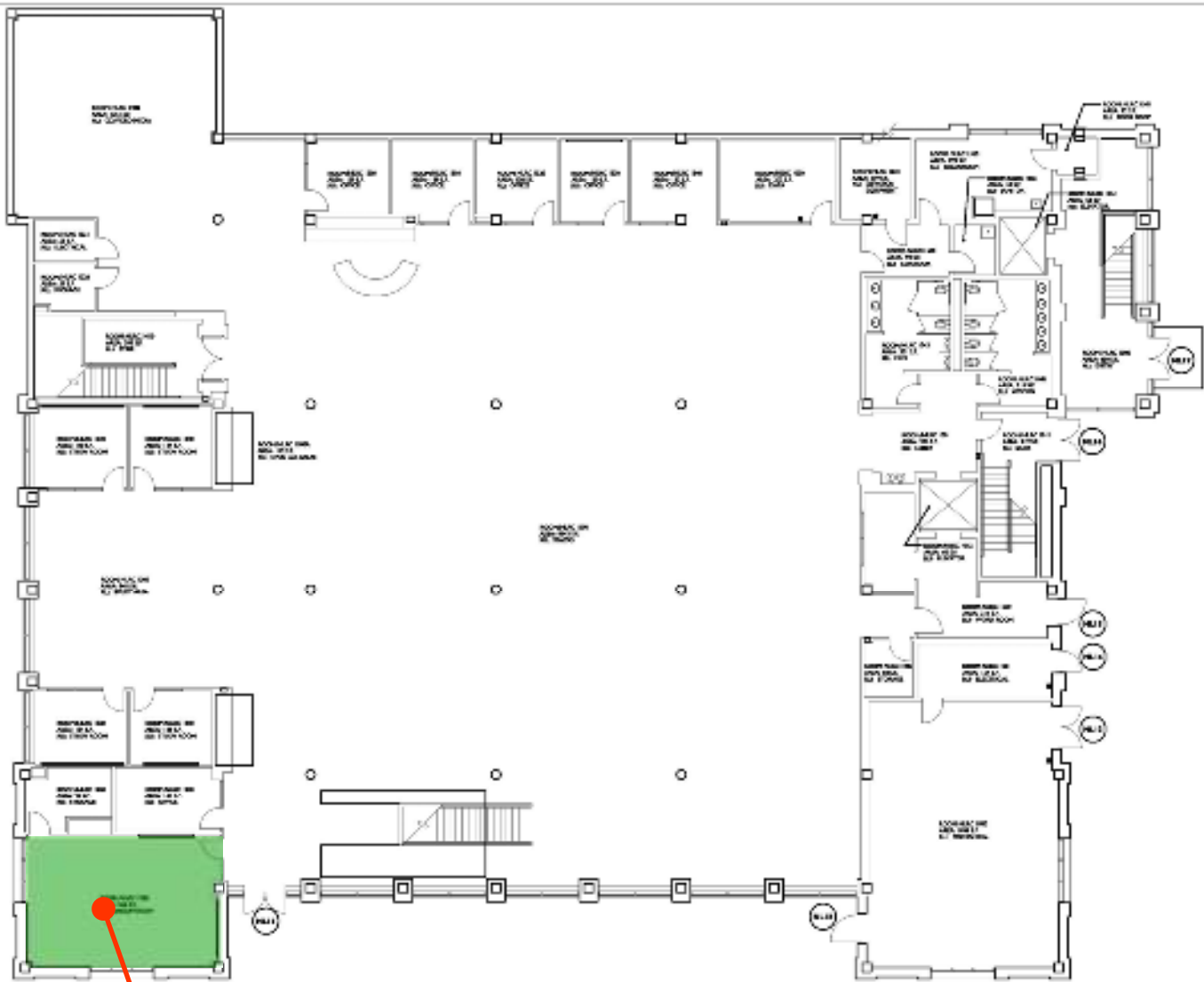


FACILITIES  
INFORMATION  
SYSTEMS  
General Public  
24 Broad Street, 2000  
Atlanta, GA 30303

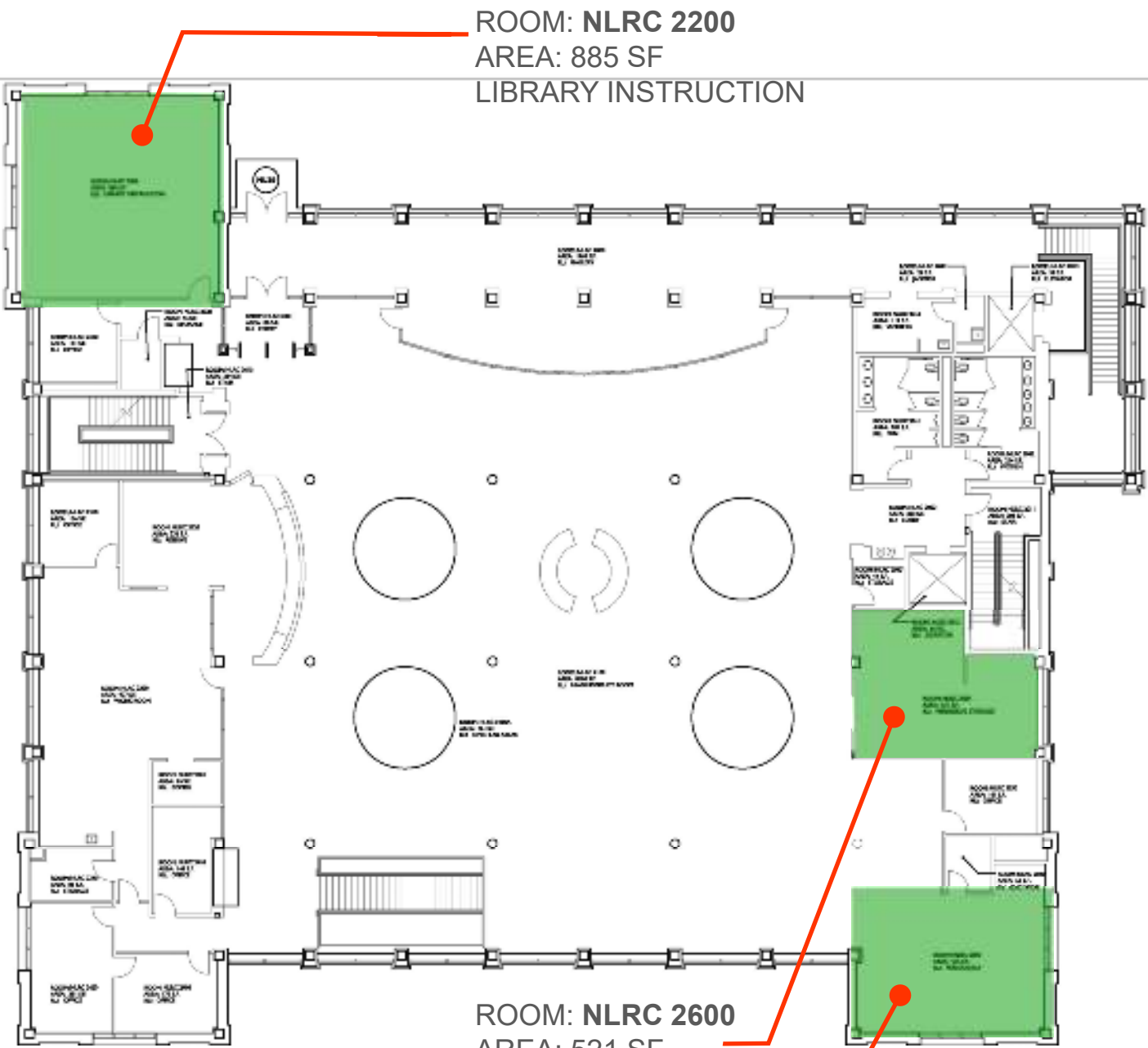
CLARKSTON LIBRARY  
FLOOR PLAN

Drawn: 7/15/16  
Scale: NO SCALE

dunwoody library



ROOM: **NLRC 1200**  
AREA: 543 SF  
GROUP STUDY



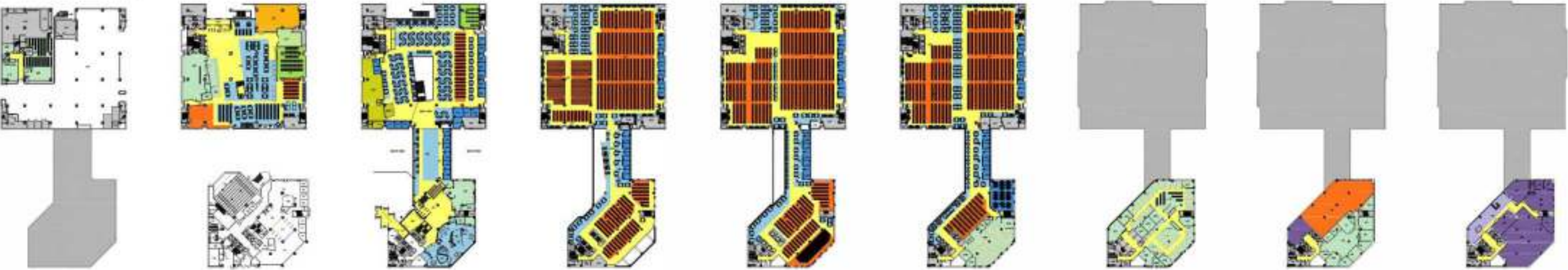
ROOM: **NLRC 2200**  
AREA: 885 SF  
LIBRARY INSTRUCTION

ROOM: **NLRC 2600**  
AREA: 521 SF  
PERIODICAL STORAGE

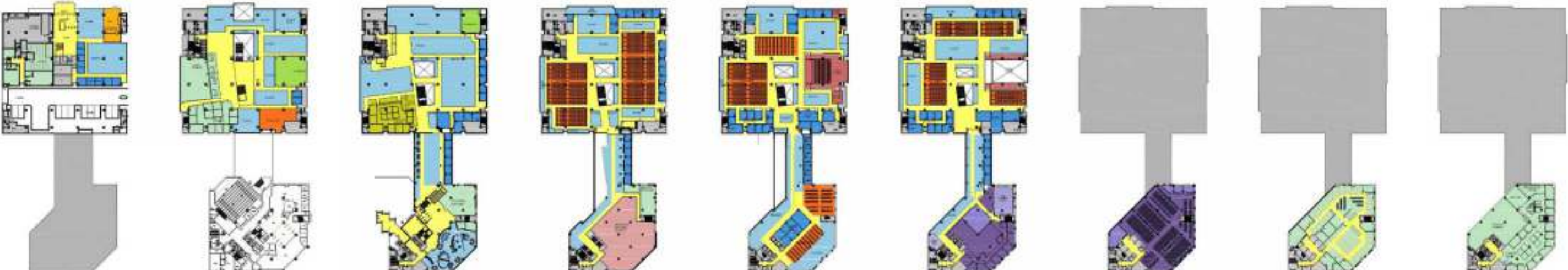
ROOM: **NLRC 2500**  
AREA: ±540 SF  
PERIODICALS

# implementation

existing

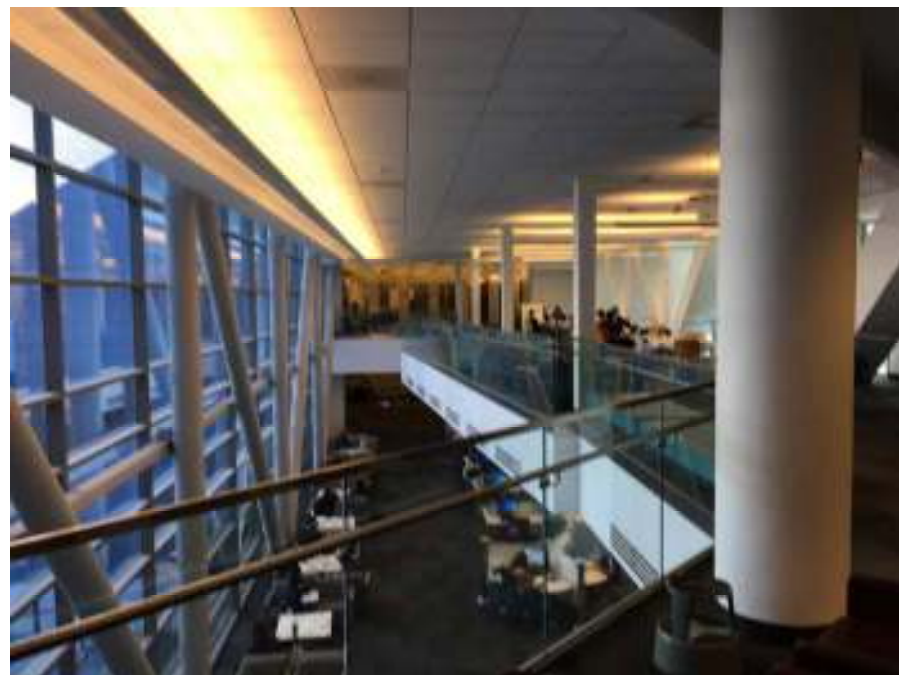


proposed

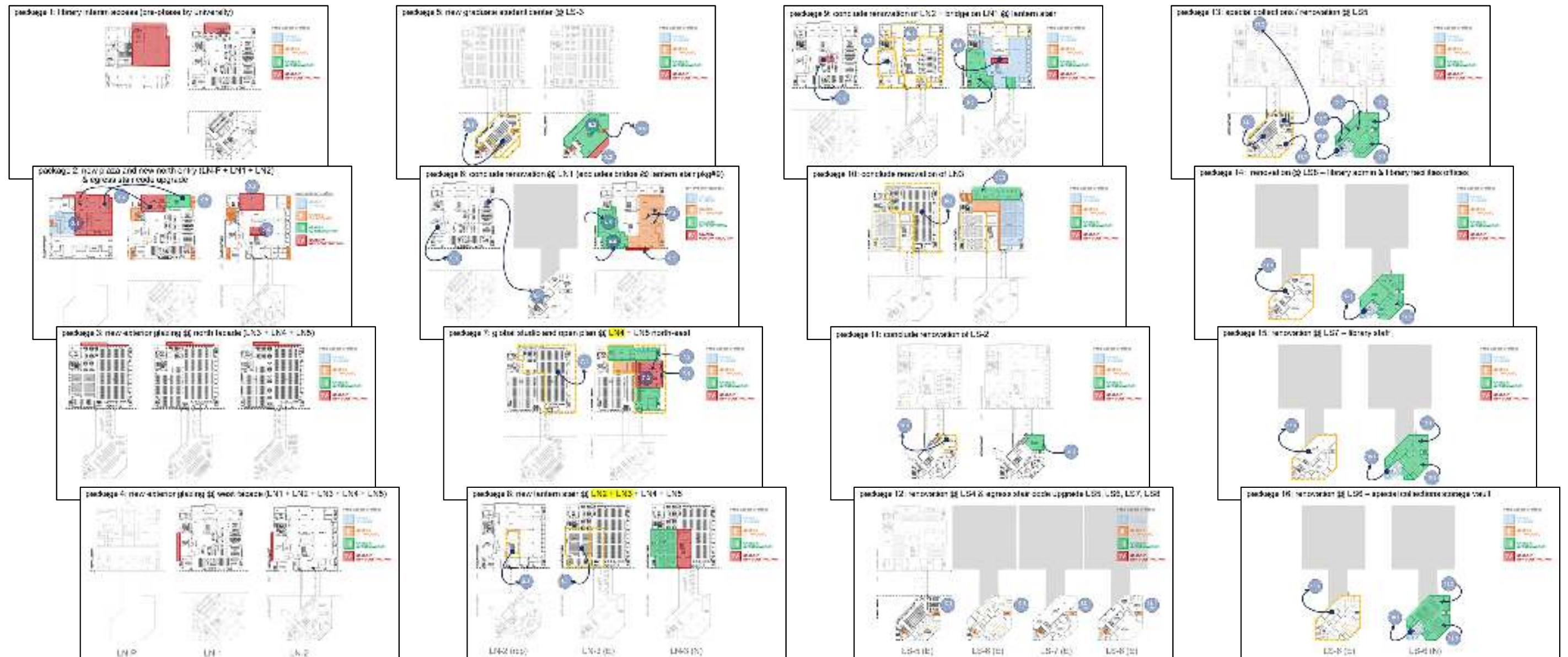


p 1 2 3 4 5 6 7 8

**implementation:** identifying levels of construction complexity and cost



# implementation: 16 scope packages allow flexible phasing









**Georgia State University**

**LIBRARY MASTER PLAN**

Presented by **Pfeiffer Partners** 24 January 2018